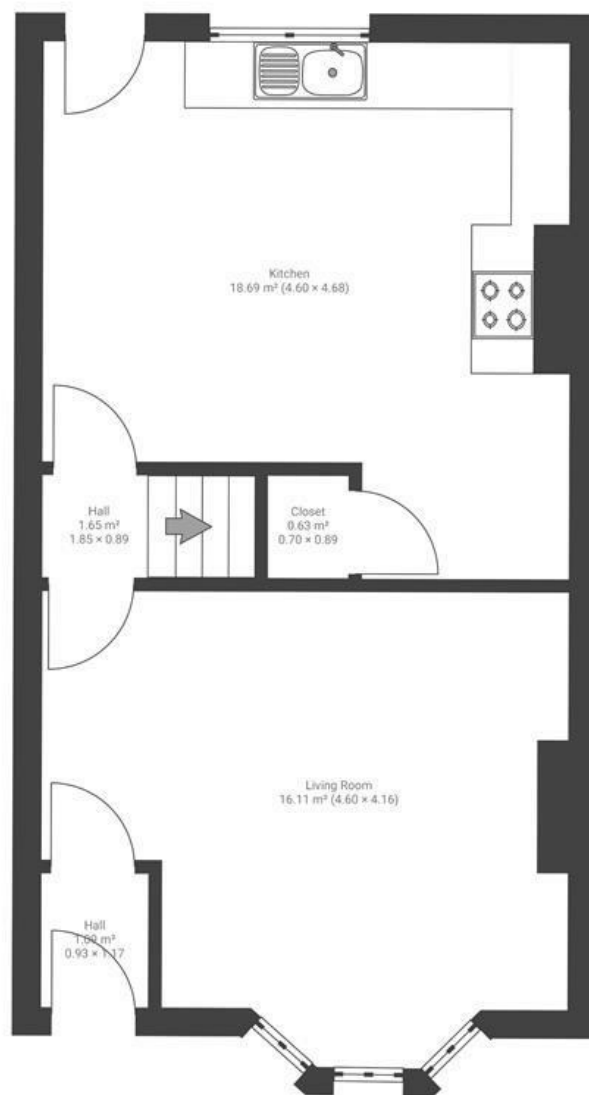


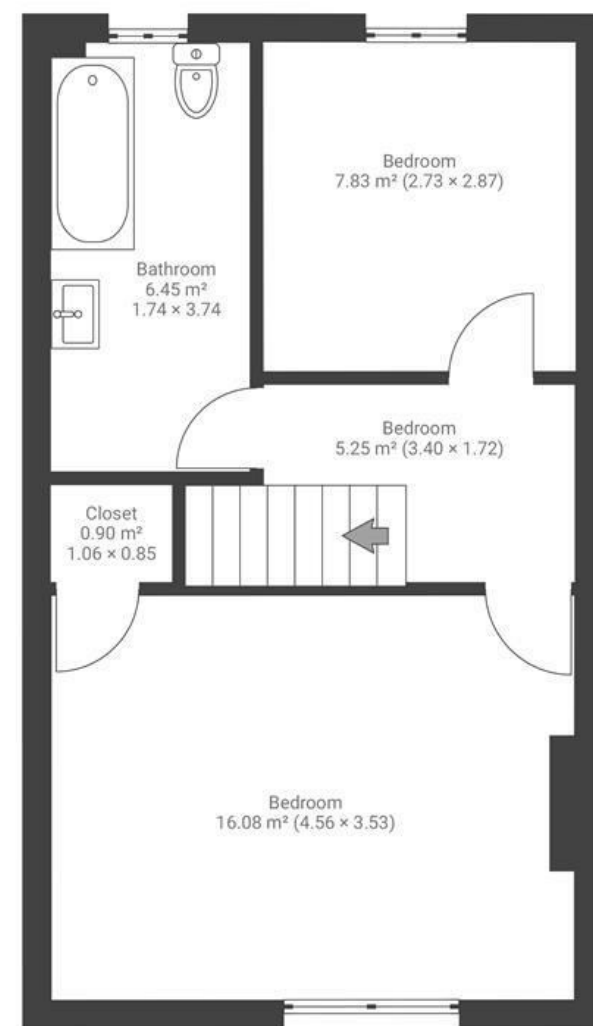
# Warminster Road

## ST WERBURGH'S

APPROXIMATE FLOOR AREA  
77.7 SQM / 836 SQFT



GROUND FLOOR



FIRST FLOOR

Boardwalk

# Warminster , BRISTOL



£385,000



2 Bedrooms



BS2 9UH



1 Bathrooms

*"We've really enjoyed living here—it's a quiet street with a great community in St Werburghs. The house has been a fantastic place to call home, and we've made the most of the garden. We've also loved having the City Farm, local pubs, and the cafés and restaurants on Mina Road nearby. The St Werburghs Community Centre is great too, with plenty of activities to get involved in."*

