

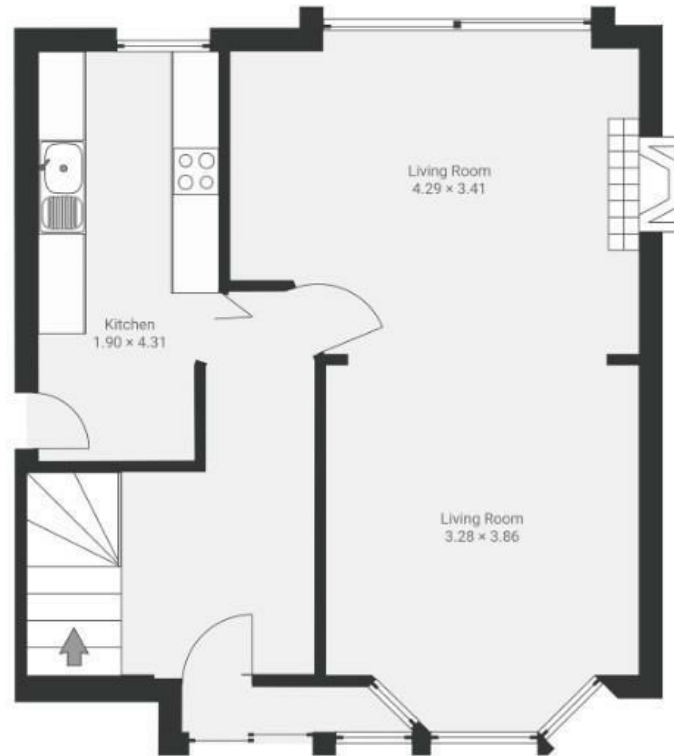
# Hillside Road

ST GEORGE

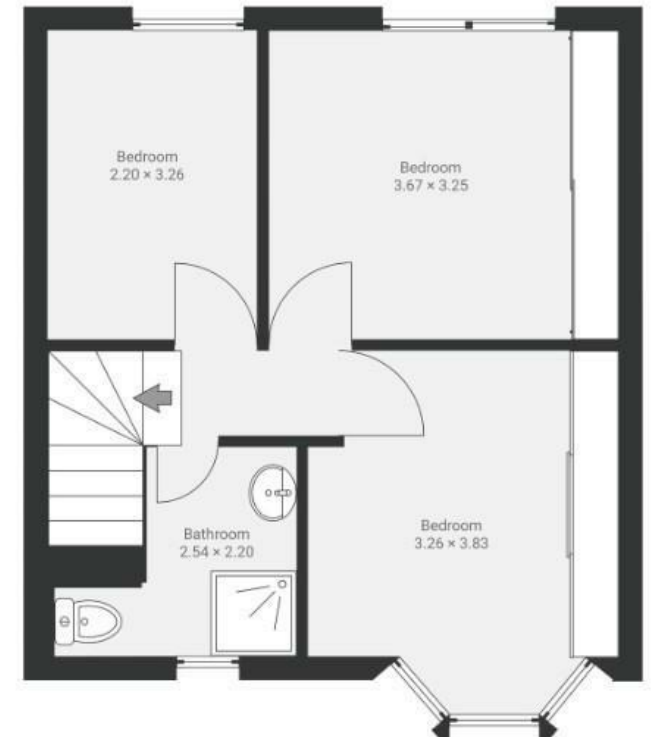
APPROXIMATE FLOOR AREA  
83.0 SQM / 893 SQFT



GROUND FLOOR



FIRST FLOOR



Illustrations are for reference purposes only, measurements are approximate, not to scale.

~~Boardwalk~~

# Hillside Road

ST GEORGE, BRISTOL



£365,000



3 Bedrooms



BS5 7PP



1 Bathrooms

*"This home has been in our family for the last 60 years, there have been so many memories made here. It has great potential to make a great home for a new family."*

