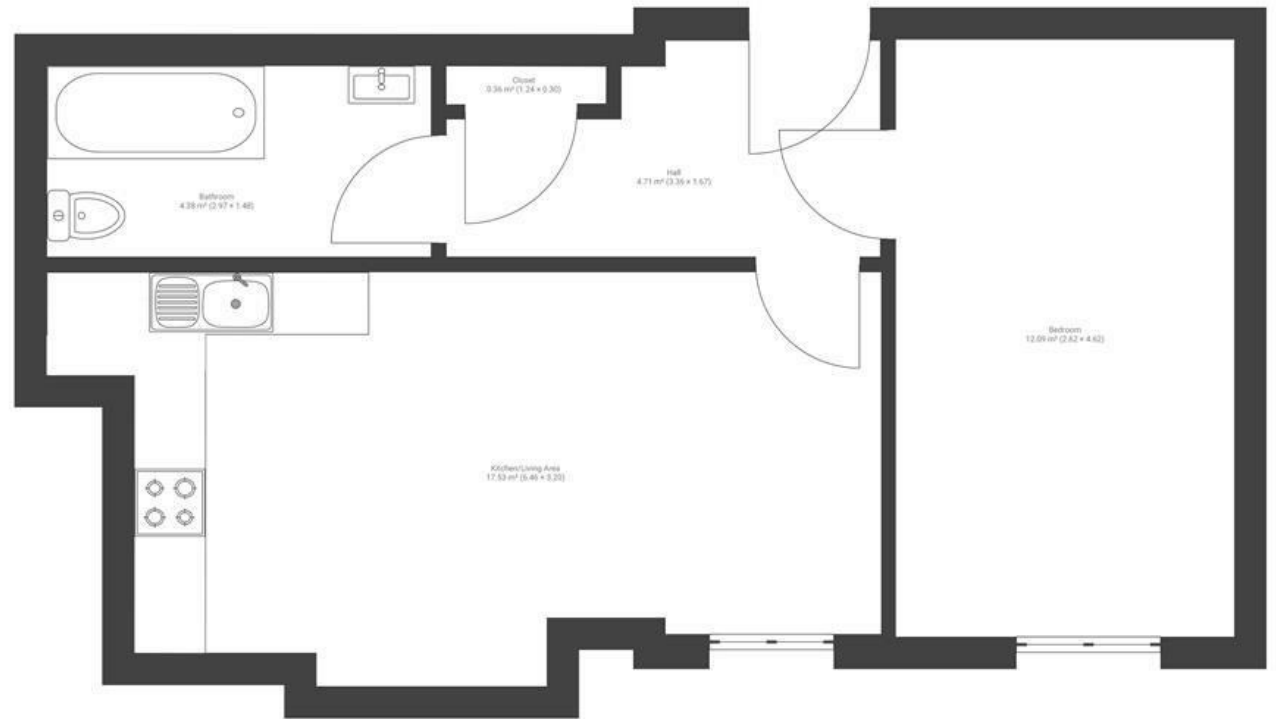


# Newfoundland Circus

ST PAULS

APPROXIMATE FLOOR AREA  
40 SQM / 430 SQFT



GROUND FLOOR

**Boardwalk**

# Newfoundland

, BRISTOL



£215,000



BS2 9AP



1 Bedrooms



1 Bathrooms

*"We've loved being able to discover somewhere different to eat every week, with Old Market, Stokes Croft and St Nick's a short walk away. Once done with the hustle and bustle of town, we can come inside our flat that is amazingly quiet and feels like a cosy oasis away from all the noise and busyness of Bristol. When we want to get out and about, being able to jump straight onto the M32 means we're in the countryside in 20 minutes so get the best of both worlds, whichever mood we're in that day."*

