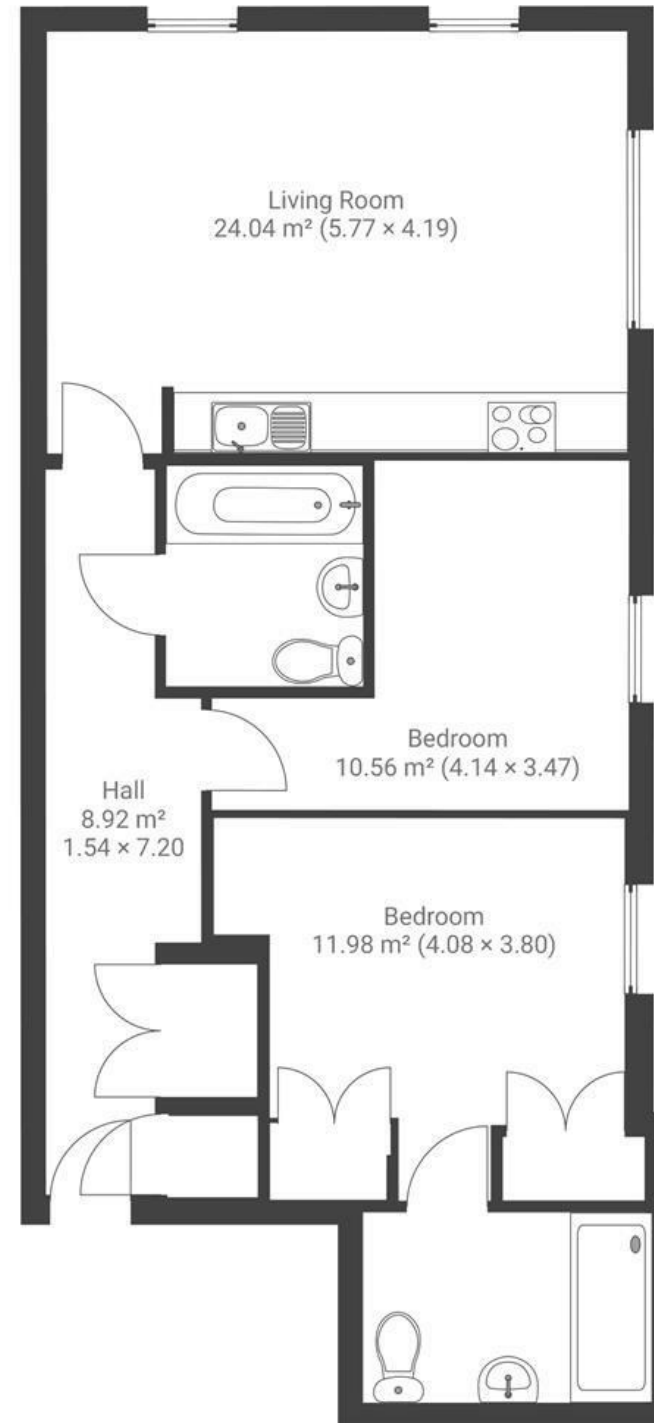


Paintworks

ARNOS VALE

APPROXIMATE FLOOR AREA
68.7 SQM / 735 SQFT



Boardwalk

Paintworks

,ARNOS VALE



£325,000



2 Bedrooms



BS4 3AS



2 Bathrooms

"Paintworks is a brilliant community with its proximity to the city centre being a huge advantage."

