

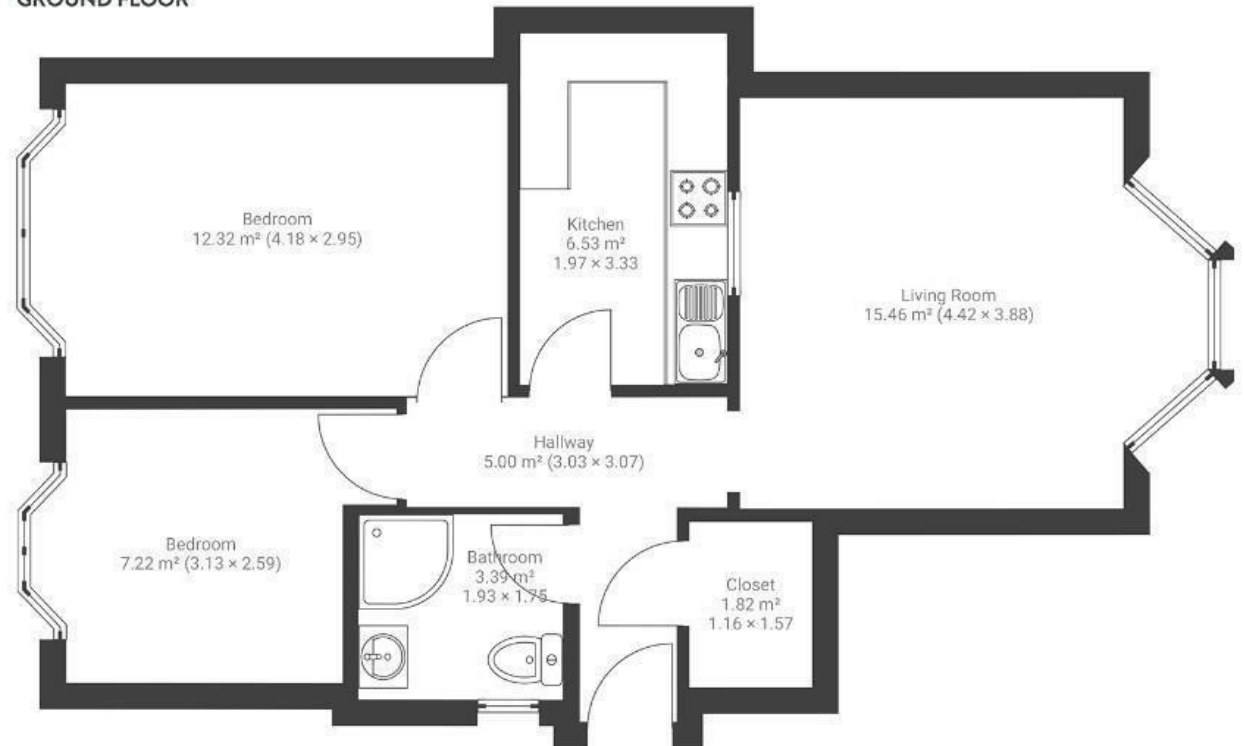
# Cotham Side

## C O T H A M

APPROXIMATE FLOOR AREA  
59 SQM / 645 SQFT



GROUND FLOOR



# Cotham Side

, BRISTOL



£400,000



BS6 5TP



2 Bedrooms



1 Bathrooms

*"We moved into this flat as a young couple, and now we're leaving as a little family of three. It's been an amazing five years exploring Bristol from our cozy home. We've enjoyed the lovely cafes on Cotham Hill and the independent shops on Gloucester Road. The peaceful garden, filled with morning sun, has been the perfect spot for us to relax with a coffee"*

