

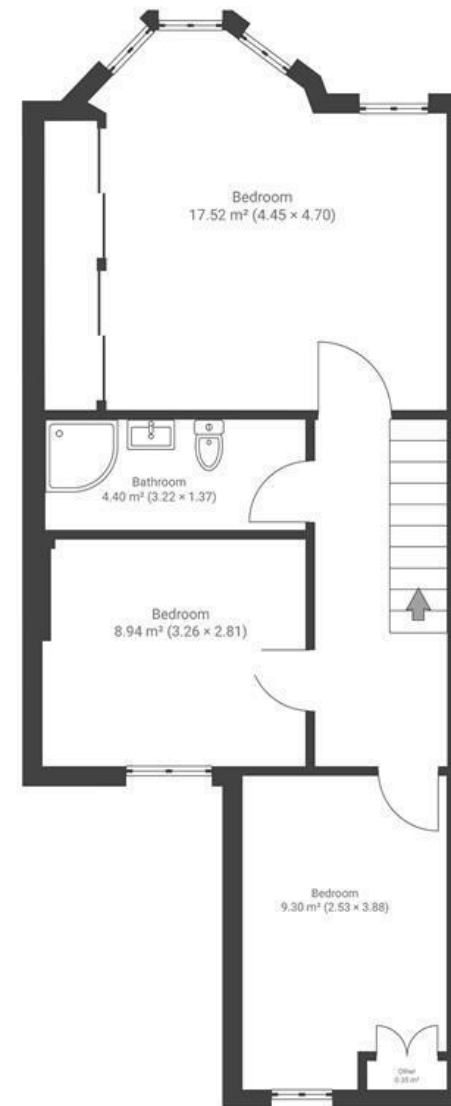
# Coronation Road

## SOUTHVILLE

APPROXIMATE FLOOR AREA  
119 SQM / 1280 SQFT



GROUND FLOOR



FIRST FLOOR

**Boardwalk**

# Coronation Road

## SOUTHVILLE, BRISTOL



£535,000



3 Bedrooms



BS3 1RL



2 Bathrooms

*"We are gutted that our circumstances mean we have to leave our gorgeous house on Coronation Road. The property is full of character and stylish features including open plan rooms, high ceilings, large diagonal floorboards and a working fireplace. We love relaxing on the sofa in the kitchen extension, which is packed with natural light and overlooks our private garden. Similarly the sunset views of Clifton Suspension Bridge from the master bedroom are stunning and the installation of secondary windows has added further tranquility. It is hard to imagine a better location, with North Street's independent shops, cafes and bars barely five minutes walk away as well as the attractions of Wapping Wharf and the harbourside on our doorstep."*

