

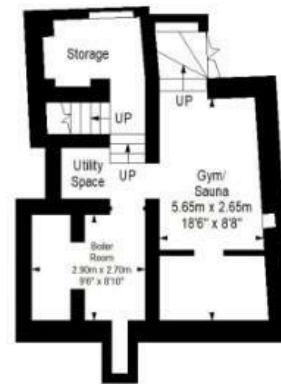
Park Road

STAPLETON

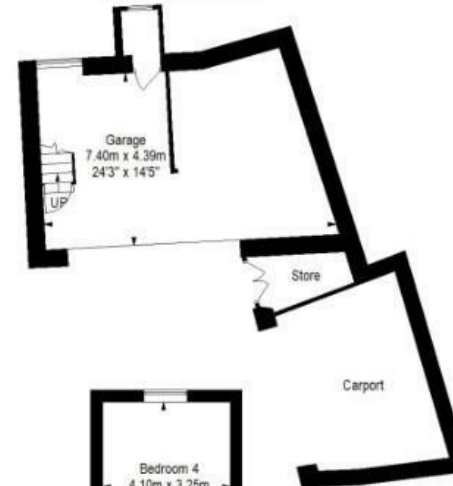
APPROXIMATE FLOOR AREA
472.5 SQM / 5086 SQFT



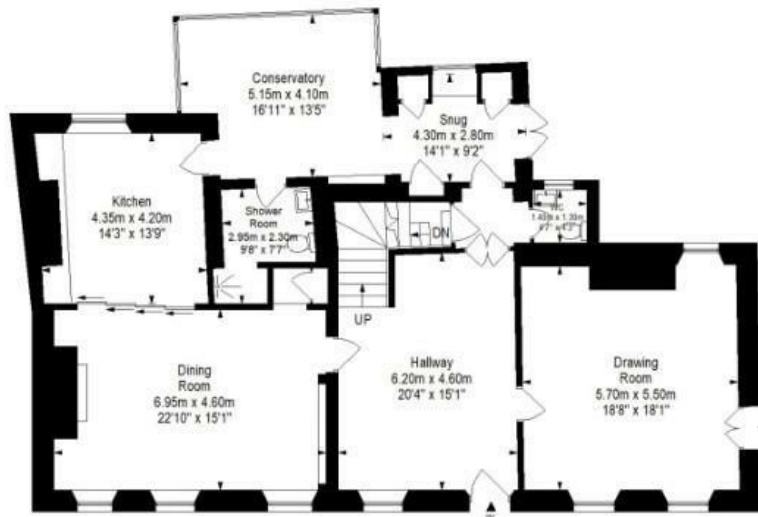
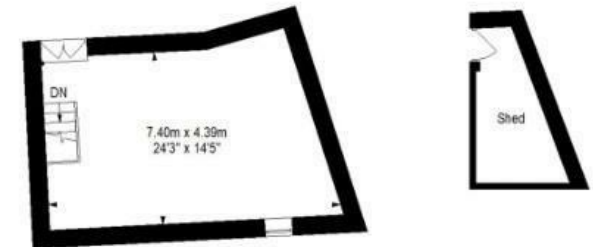
BASEMENT



GROUND FLOOR



FIRST FLOOR



GROUND FLOOR

FIRST FLOOR

SECOND FLOOR

Illustrations are for reference purposes only, measurements are approximate, not to scale.

Boardwalk

Park Road

STAPLETON, BRISTOL



£1,795,000



6 Bedrooms



BS16 1AU



5 Bathrooms

"There is a strong community presence in Stapleton, the church supports the essence of the village along with the village hall, cricket club and Elm Tree city farm and farm shop. The pub provides a happy community space with a fantastic beer garden and a good Sunday lunch. The village convenience store owners know everyone on first name terms, leaving Stapleton will be hard but I am excited for the new owners to move into such a fantastic community"

