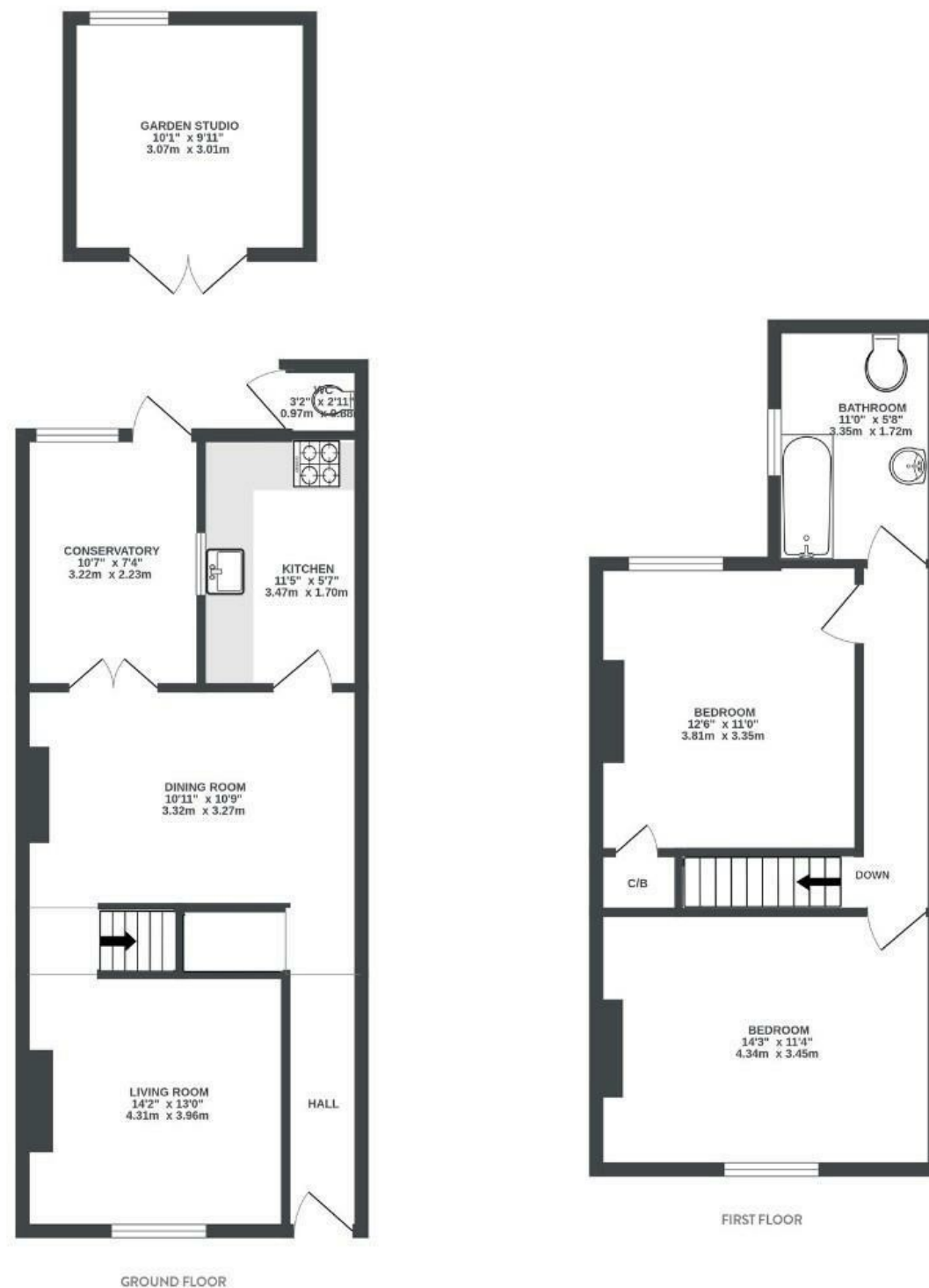


Lewin Street

REDFIELD

APPROXIMATE FLOOR AREA
92.3 SQM / 993 SQFT



Boardwalk

Lewin Street

REDFIELD, BRISTOL



£380,000



2 Bedrooms



BS5 9NU



1 Bathrooms

"We've loved living in this house and this neighbourhood. We've spent 10 years pouring love into the place and celebrating with loved ones here. Before we had our son we enjoyed the many amazing pubs, including the Dark Horse, The Stillage and the Red Lion but now we spend more time in the beautiful St Georges Park. We've loved being so close to the cycle path and have joined in with so many community events that are always popping up. We've also been so lucky to have such friendly neighbours."

