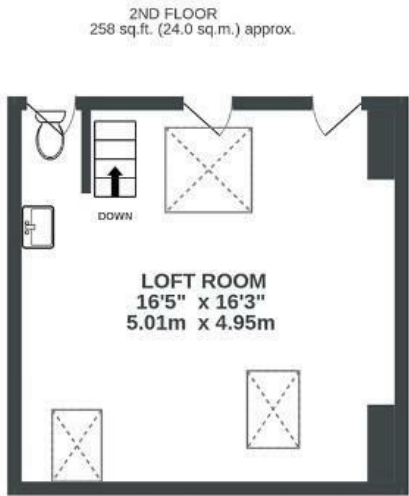
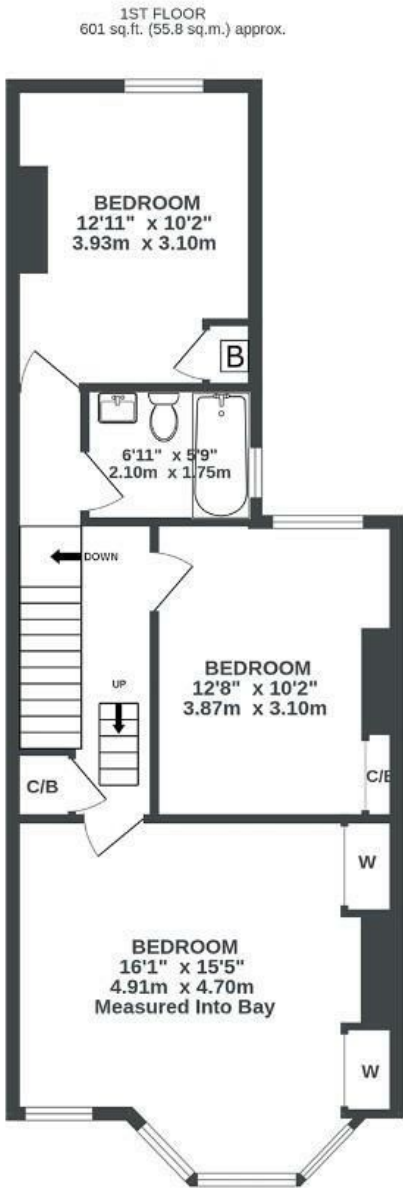
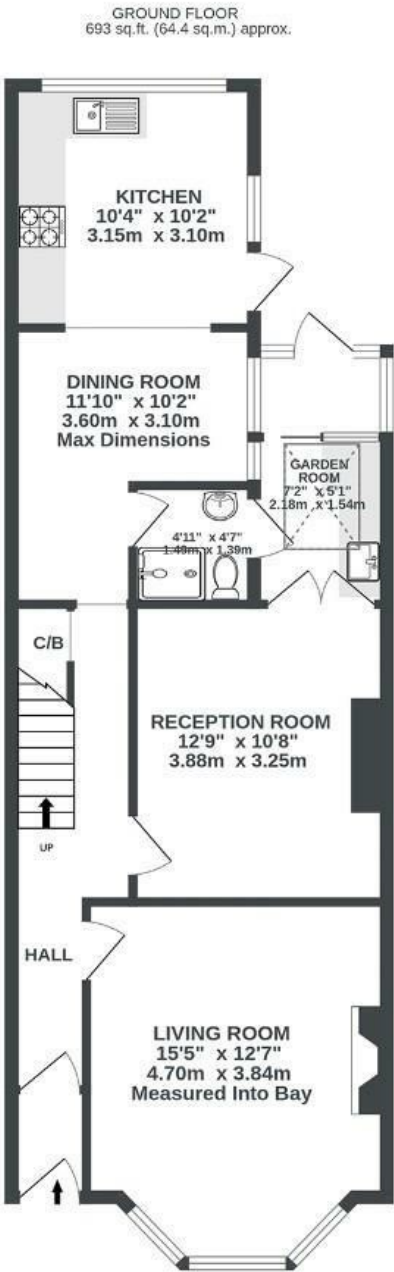


# Stackpool Road

## SOUTHVILLE

APPROXIMATE FLOOR AREA  
144.2 SQM / 1552 SQFT



Illustrations are for reference purposes only, measurements are approximate, not to scale.

Boardwalk

# Stackpool Road , BRISTOL



£650,000



3 Bedrooms



BS3 1NX



2 Bathrooms

*"Stackpool Road has been my home for the last 35 years, I watched my daughter grow up here. On the street we share a lot of collaborative fun, including nativity carolling and summer street parties. I made a self-contained flatlet from the old greenhouse as a welcome place for Air BnB visitors who appreciated its ensuite & tiny kitchenette."*

