

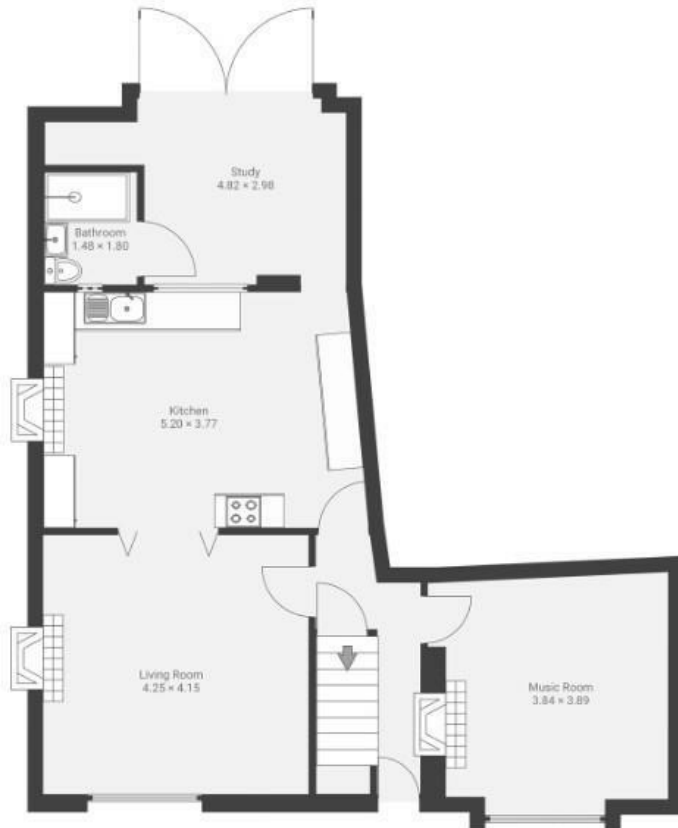
# High Street

## STAPLE HILL

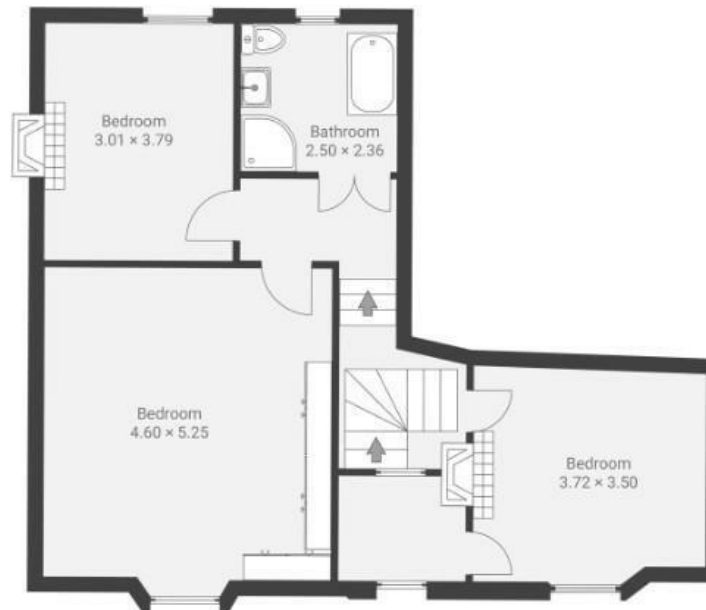
APPROXIMATE FLOOR AREA  
126.0 SQM / 1356 SQFT



GROUND FLOOR



FIRST FLOOR



LOWER GROUND FLOOR



**Boardwalk**

# High Street

STAPLE HILL, BRISTOL



£475,000



BS16 5HD



3 Bedrooms



2 Bathrooms

*"No. 51 has been the most exceptional home for us over the last 9 years we have lived here. As a young couple, we fell in love with all the original Victorian features: the large light and airy rooms, the high ceilings, the cornices and ceiling roses. Situated on a thriving high street, we have loved the convenience of having all the independent coffee shops, cafes, pubs, restaurants, and useful amenities like a post office and supermarket a stone's throw away. We started our family here and with three energetic boys, fantastic local parks like Page Park and Oldbury Court have been a Godsend at weekends. They all went to a fantastic nursery a few minutes' walk away, Red Bus, rated Outstanding by Ofsted twice in a row. We will particularly miss piling into our basement cinema room for family movie night! We are sad to be moving on, only doing so to be closer to our children's new school, but we hope the new owners are as happy here as we have been."*

