

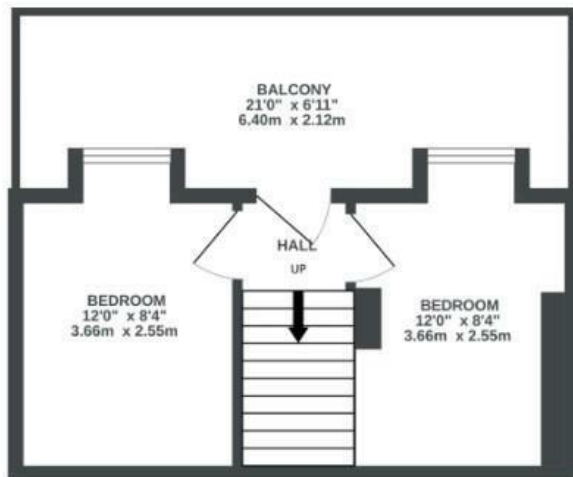
Victoria Street

REDCLIFFE

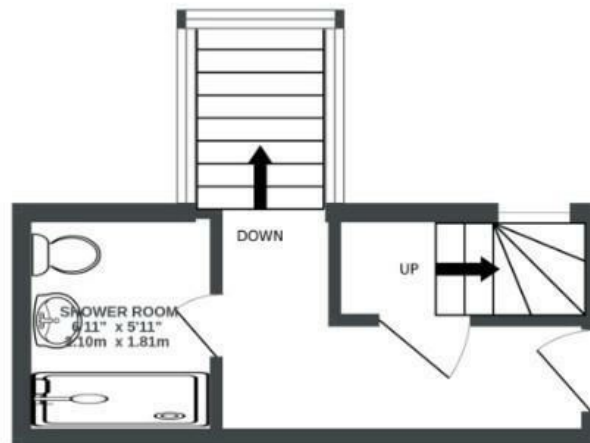
APPROXIMATE FLOOR AREA
58.6 SQM / 631 SQFT



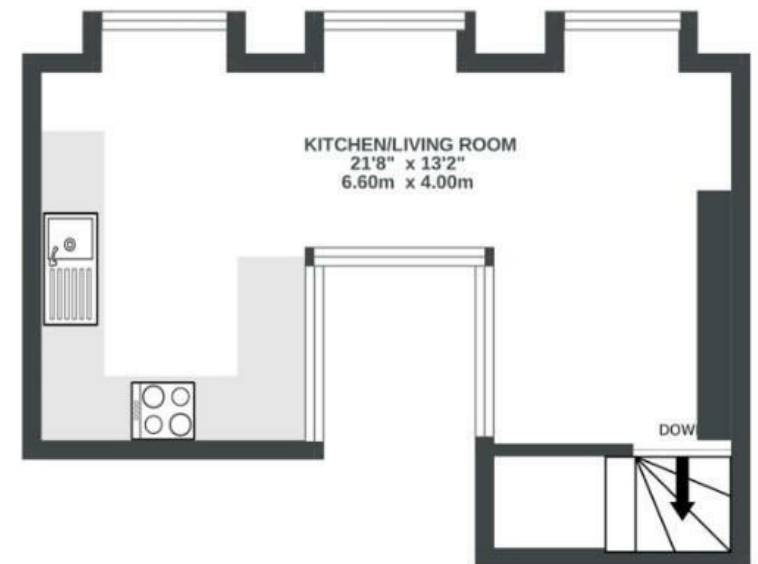
LOWER GROUND FLOOR



GROUND FLOOR



FIRST FLOOR



Illustrations are for reference purposes only,
measurements are approximate, not to scale.

Boardwalk

Victoria Street , BRISTOL



£300,000



BS1 6BN



2 Bedrooms



1 Bathrooms

"Some of my favourite past times while living in Bristol is greeting my friends at Temple meads station - a stones throw away, walking them back to the flat, dropping off the bags and heading out to Left Handed Giant for some drinks, St Nics Market for some food, or Queens Square for some sun."

