

St. Peter's Rise

BISHOPSWORTH

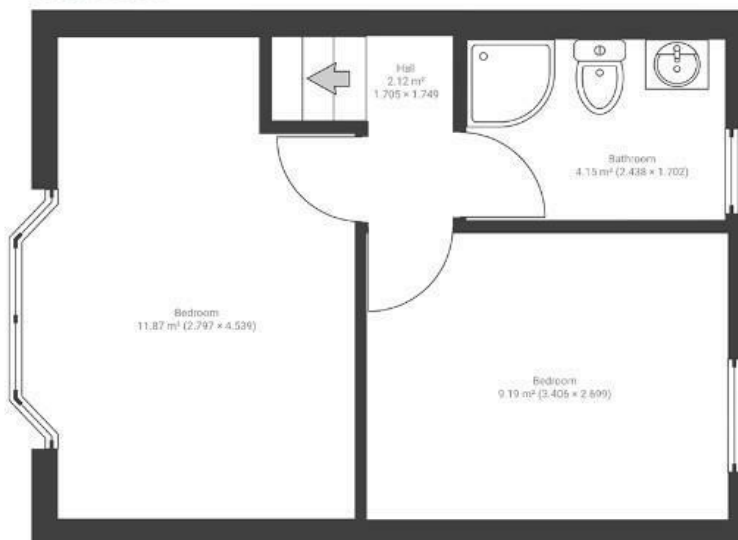
APPROXIMATE FLOOR AREA
88 SQM / 947 SQFT



GROUND FLOOR



FIRST FLOOR



Boardwalk

St. Peters Rise

, BRISTOL

£

£325,000



BS13 7NE

zzz

2 Bedrooms



1 Bathrooms

"Our home is warm and peaceful, and in the winter, the log burner makes it feel extra cosy. In the summer, the garden really comes into its own. It gets the sun all day, making it a great space for BBQs and relaxing outdoors. If you keep the young apple tree pruned each winter, you'll get apples in a few years. It's close enough to town to be really convenient, but just far enough out to feel quieter. Manor Woods is just over the road and Ashton Court is only 10 minutes away."

