

**Boardwalk**

# Mina Road

## ST WERBURGHS

APPROXIMATE FLOOR AREA  
62.5 SQM / 673 SQFT

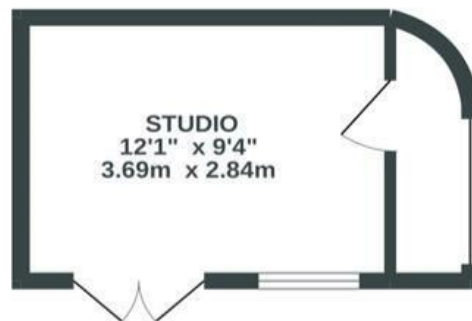
### BOOK A VIEWING

01179 898 222

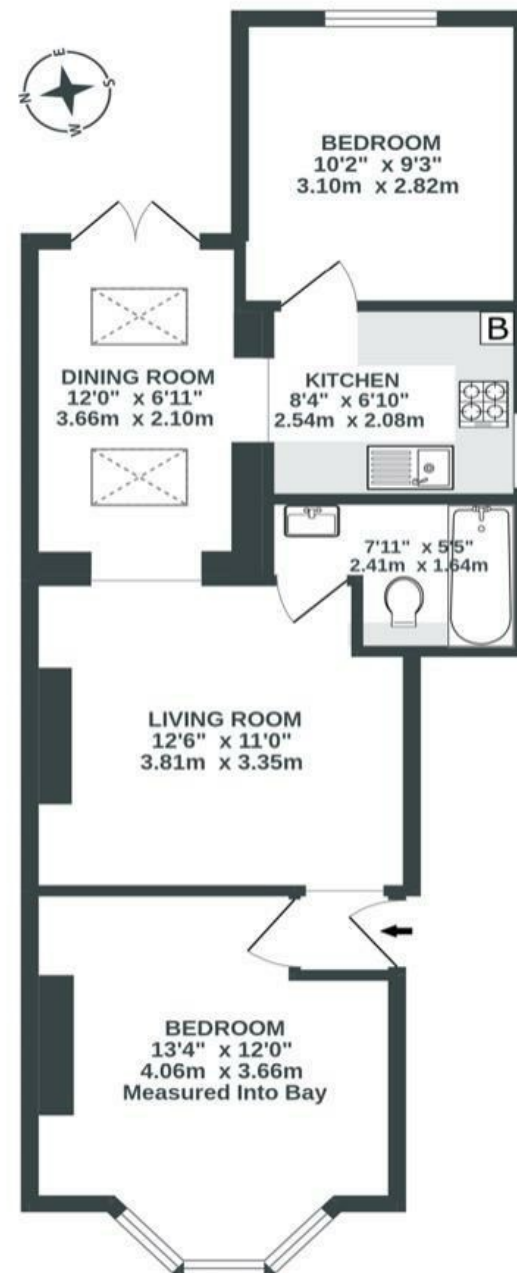
hello@boardwalkpropertyco.com



GARDEN STUDIO  
(NOT IN SITU)  
135 sq.ft. (12.5 sq.m.) approx.



GROUND FLOOR  
538 sq.ft. (50.0 sq.m.) approx.



Illustrations are for reference purposes only, measurements are approximate, not to scale.

**Boardwalk**

# Mina Road

, BRISTOL

£

£300,000



BS2 9TB

zzz

2 Bedrooms



1 Bathrooms

*This charming home features large bay windows that flood the space with natural light, highlighting the beautifully restored wooden floors. The dining room, with its skylight, offers the perfect spot to sit and enjoy a book. Afternoons have often been spent basking in the sun in the back garden. The studio provides an ideal workspace, allowing for focus during the day and a peaceful retreat to leave work behind when the day is done.*

