

Boardwalk

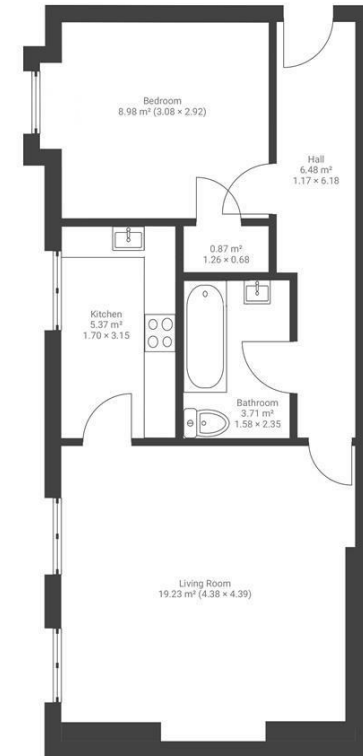
Cleeve Wood

, BRISTOL

Cleevewood House

DOWNEND

APPROXIMATE FLOOR AREA
45 SQM / 484 SQFT



SECOND FLOOR

Boardwalk

Cleeve Wood

, BRISTOL

£

£227,500



BS16 2ST

zzz

1 Bedrooms



1 Bathrooms

"It's a beautiful converted manor house, grade 2 listed and set in gorgeous grounds. The river Frome basically runs through the front garden and the beautiful little hamlet of Frenchay is just a stones throw over the water. Our absolute favourite activity is to wander across Frenchay common on a hot summer's evening and get an after work pint at the pub before strolling back, petting Harry the horse in his field. The Frome Valley is a special haven and right on the doorstep."

