

Boardwalk

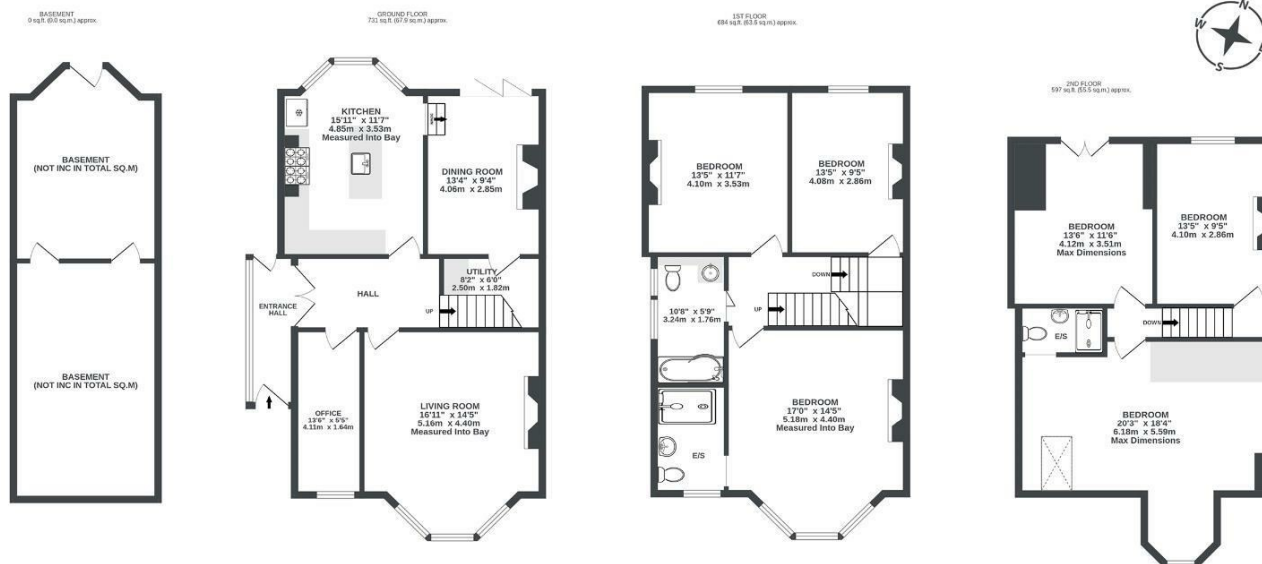
Crowndale Road

, BRISTOL

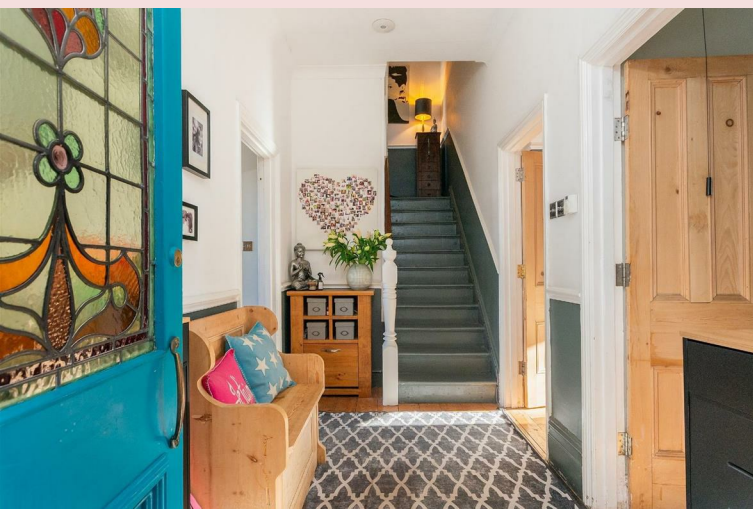
Crowndale Road

TOTTERDOWN

APPROXIMATE FLOOR AREA
187 SQM / 2013 SQFT



Illustrations are for reference purposes only, measurements are approximate, not to scale.



Boardwalk

Crowndale Road , BRISTOL



£875,000



BS4 2DZ



6 Bedrooms



3 Bathrooms

"We've loved raising our 2 children with our cats & dog, watching hot air balloons over Bristol to family walks in the park at the end of our road. Our neighbourhood is special, with a strong community, helpful WhatsApp group, a vibrant local scene, including café, bar, and Co-op. We've enjoyed art trails, local events, and the beauty of our tree-lined street. Being minutes from the train station and direct buses to the city, Cribbs and Clifton and within the Hillcrest School catchment."

