

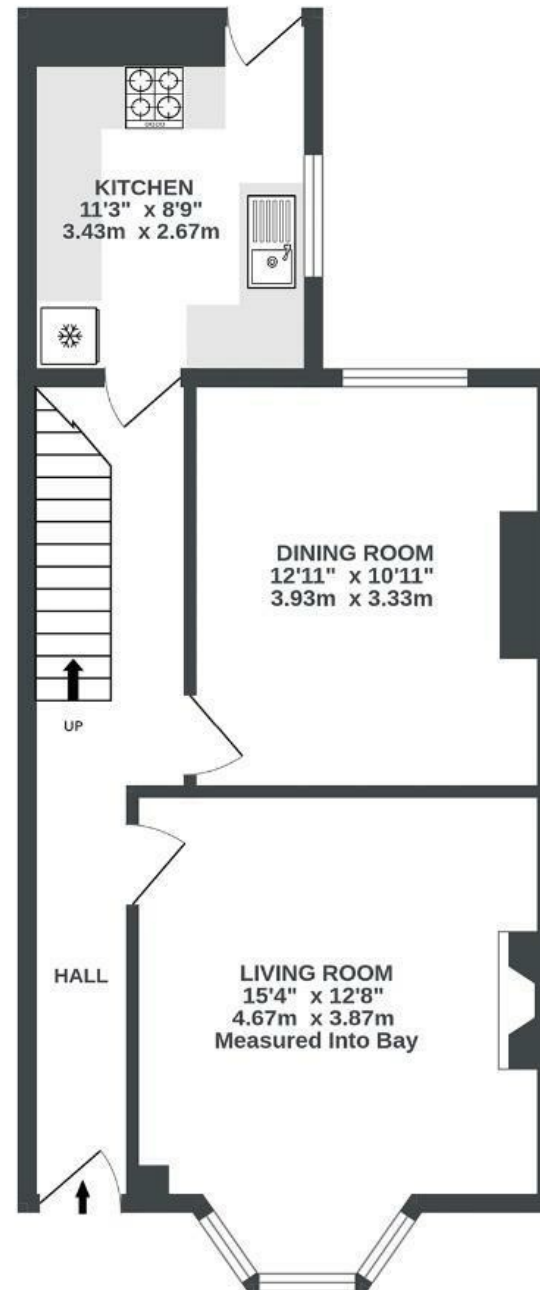
# Shaftesbury Avenue

## MONTPELIER

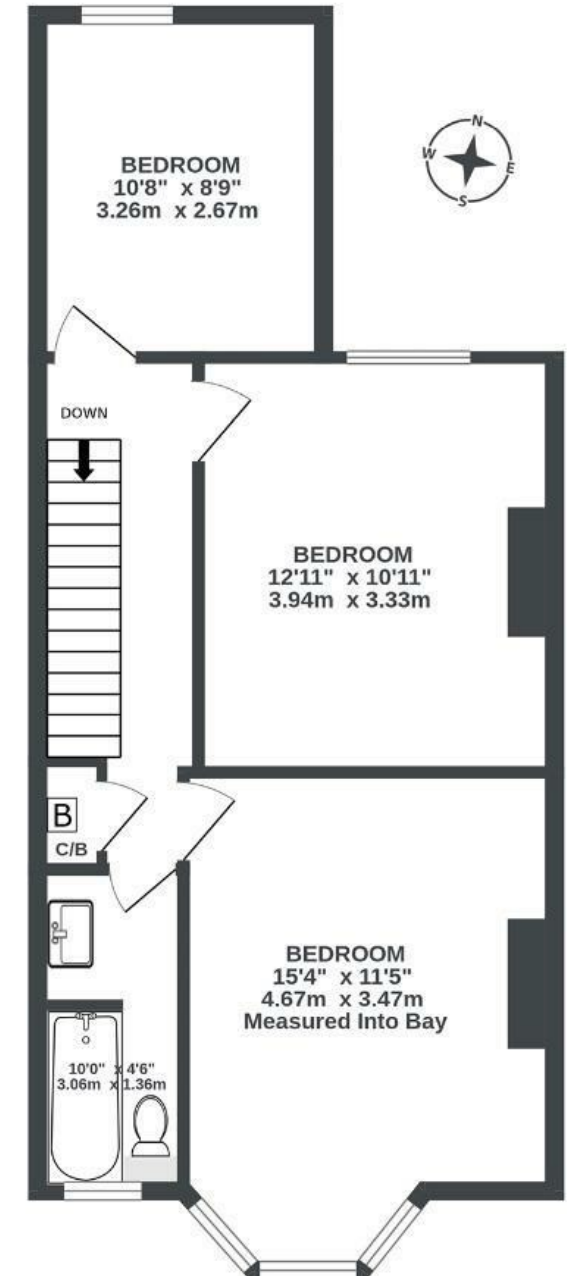
APPROXIMATE FLOOR AREA  
93.9 SQM / 1011 SQFT



GROUND FLOOR  
502 sq.ft. (46.6 sq.m.) approx.



1ST FLOOR  
509 sq.ft. (47.3 sq.m.) approx.



Illustrations are for reference purposes only, measurements are approximate, not to scale.

**Boardwalk**

# Shaftesbury

MONTPELIER, BRISTOL

£

£500,000



BS6 5LY

zzz

3 Bedrooms



1 Bathrooms

*"We've both absolutely loved living here and will be so sad to move away. Being in Montpelier is the best of both worlds, you get to enjoy all the amazing things that such a cool neighbourhood of the city has (several amazing restaurants under three mins walk away, great pubs, shops and more) whilst also being part of a community that is more akin to a village at times. We can walk into the town centre in fifteen minutes, and in fifteen minutes the other way we can be at The City Farm in St Werburghs."*

