

Banwell Road

ASHTON

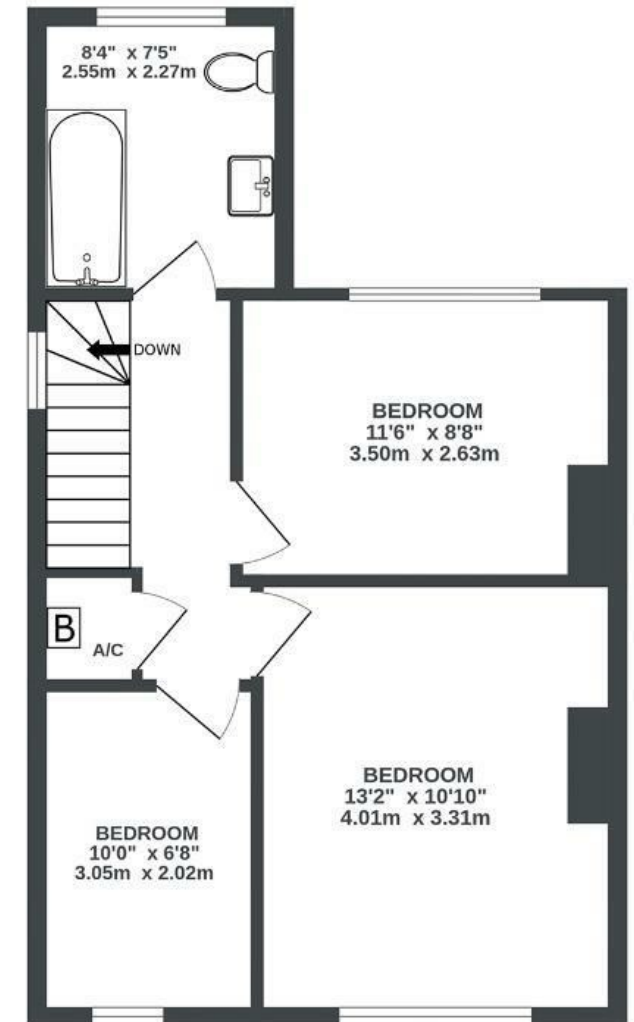
APPROXIMATE FLOOR AREA
83.8 SQM / 902 SQFT



GROUND FLOOR
467 sq.ft. (43.4 sq.m.) approx.



1ST FLOOR
435 sq.ft. (40.4 sq.m.) approx.



Illustrations are for reference purposes only, measurements are approximate, not to scale.

Boardwalk

Banwell Road

, BRISTOL



£575,000



BS3 2DW



3 Bedrooms



1 Bathrooms

"Living on Banwell Road for the past 7 years has been a wonderful place to be. The people on the street make it a community in itself, where everyone looks out for one another and their families. We have a street party every year and Christmas carol sing along as well as a fantastic Halloween celebration! Neighbours are all Friendly and help out at the drop of a hat- whether it be an urgent tin of beans needed or help Out with the walk To School."

