

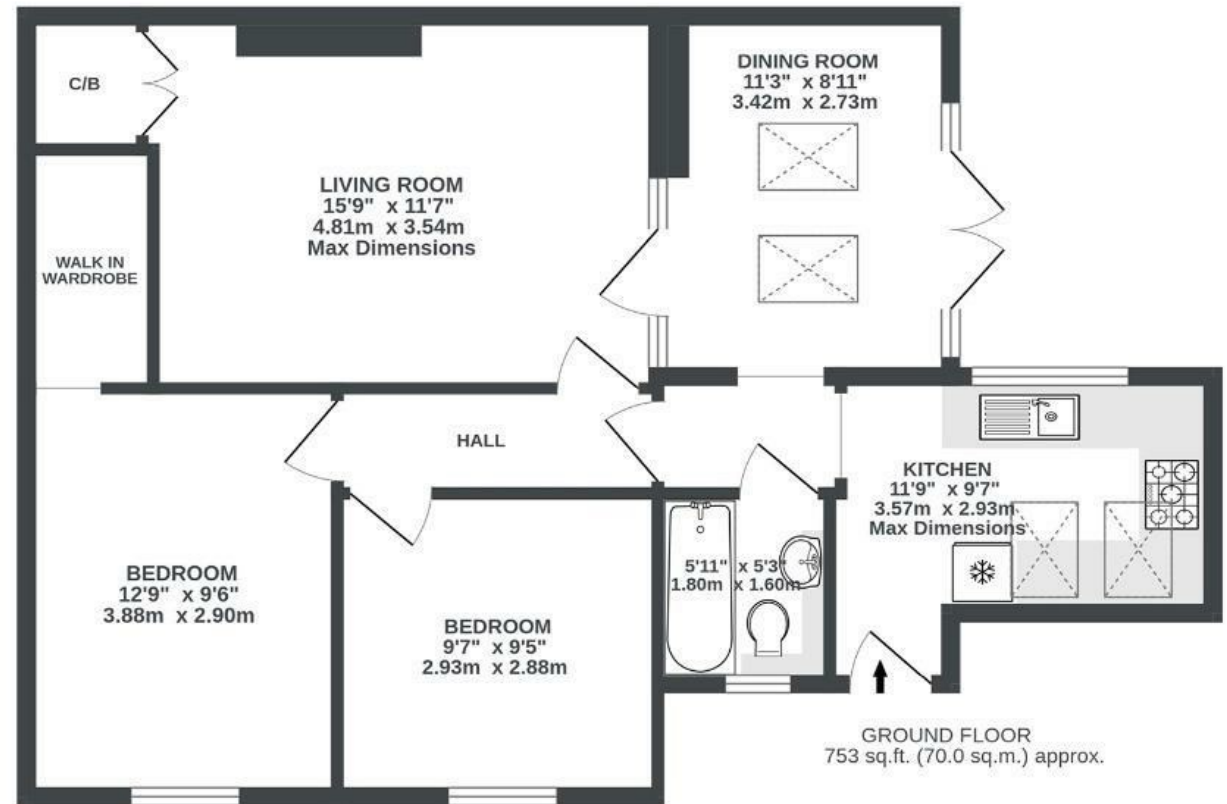
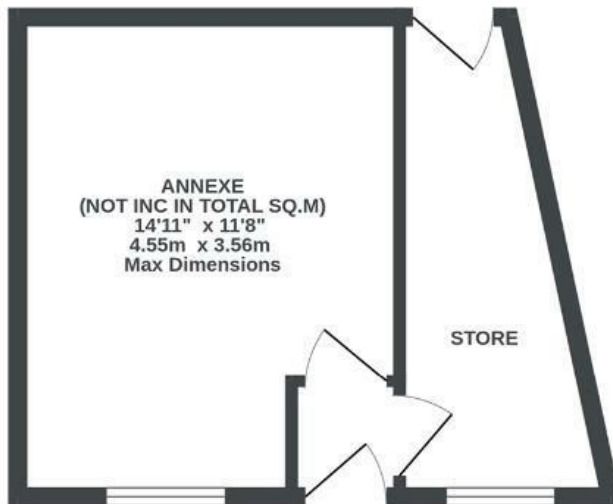
Purton Road

BISHOPSTON

APPROXIMATE FLOOR AREA
70 SQM / 753 SQFT



ANNEXE - NOT IN SITU
(NOT INC IN TOTAL SQ.M)
0 sq.ft. (0.0 sq.m.) approx.



Illustrations are for reference purposes only, measurements are approximate, not to scale.

Boardwalk

Purton Road

BISHOPSTON, BRISTOL

£

£425,000



BS7 8DB

z z z

2 Bedrooms



1 Bathrooms

"I really love my flat, it's in such a great location, with the convenience of Gloucester Road, but it is far enough back that it is still very quiet. My favourite restaurant nearby is Kal Dosa which serves amazing Indian food. It's also very close to Chance & Counters where I spend a lot of time with my partner. It's the perfect date night location. My dining room is my favourite room as it's so light and backs on to my garden which is perfect for hosting BBQs in summer!"

