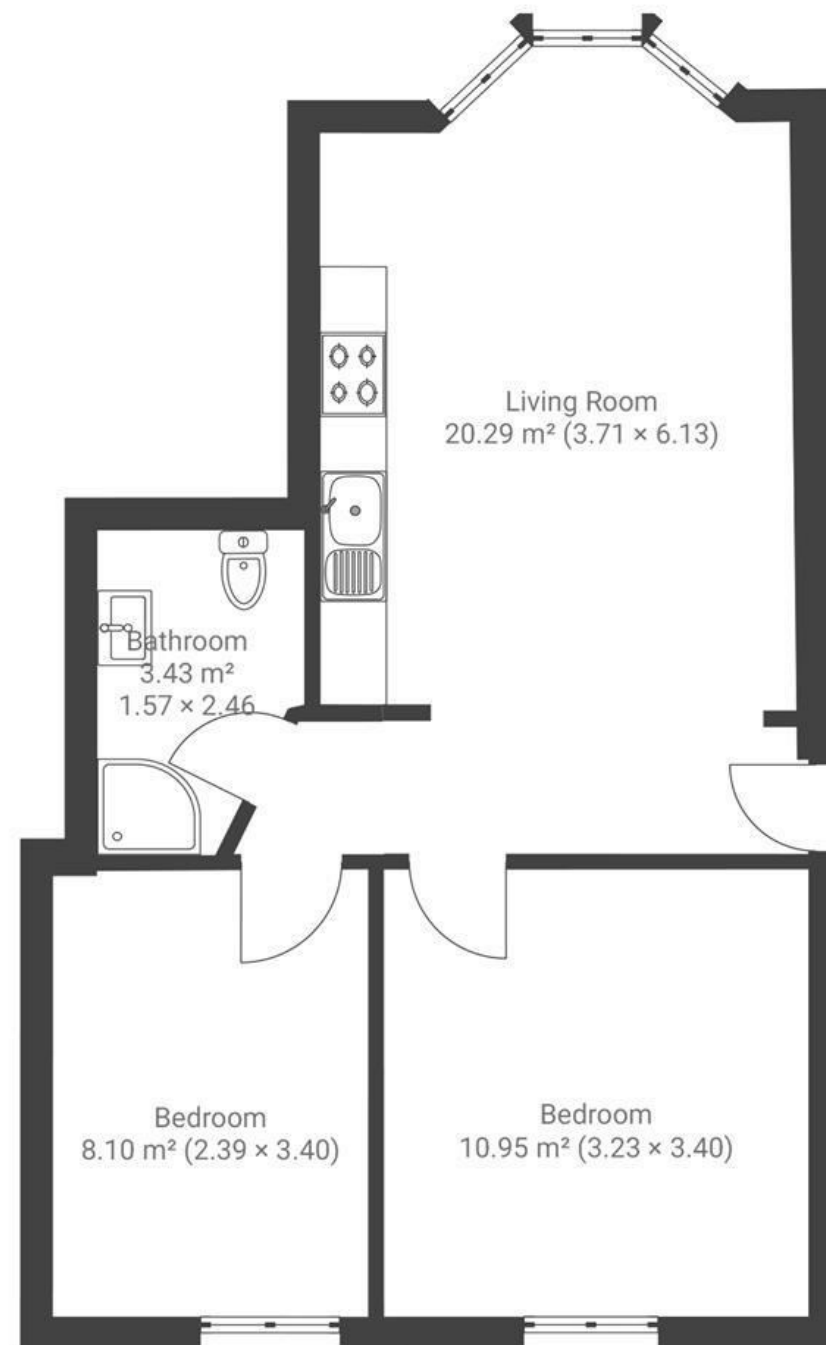


Islington Road

SOUTHVILLE

APPROXIMATE FLOOR AREA
52 SQM / 560 SQFT



Boardwalk

Islington Road

SOUTHVILLE, BRISTOL



£325,000



2 Bedrooms



BS3 1QB



1 Bathrooms

"I feel very lucky to have found this bright garden flat on Islington Road. The garden has been such a source of joy for me - learning to grow my own veg and enjoying a peaceful morning coffee or drinks in the sun with friends. I've spent many weekends mooching the local farmer's market and charity shops, catching up with friends in the Spotted Cow, enjoying countless coffees from Sweven, yoga classes in Wapping Wharf and running around Ashton Court. I'll definitely miss it."

