

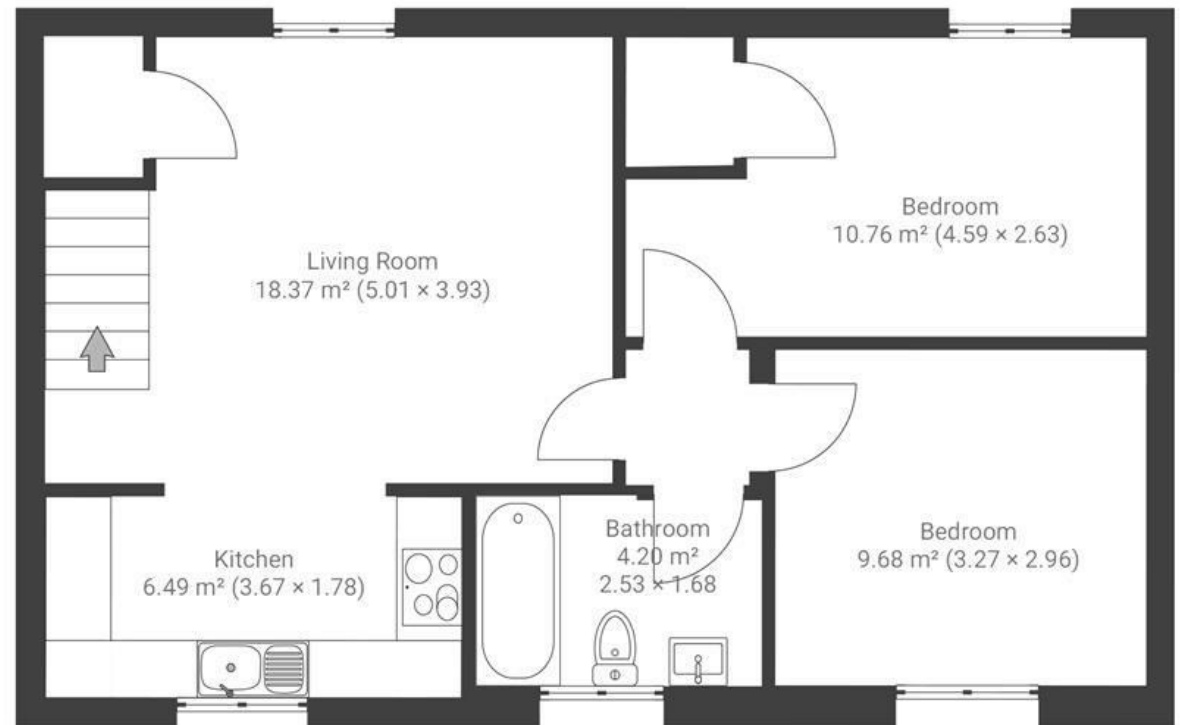
Inkerman Close

HORFIELD

APPROXIMATE FLOOR AREA
56 SQM / 613 SQFT



FIRST FLOOR



Boardwalk

Inkerman Close

HORFIELD, BRISTOL

£

£250,000

zzz

2 Bedrooms

📍

BS7 0XU

🛀

1 Bathrooms

"This modern and spacious coach house has been a perfect first home for us, with plenty of fond memories of walking along Gloucester Road and enjoying the unique charm of the neighbourhood. It's a true gem that will no doubt bring the new owners much happiness with their choice!"

