

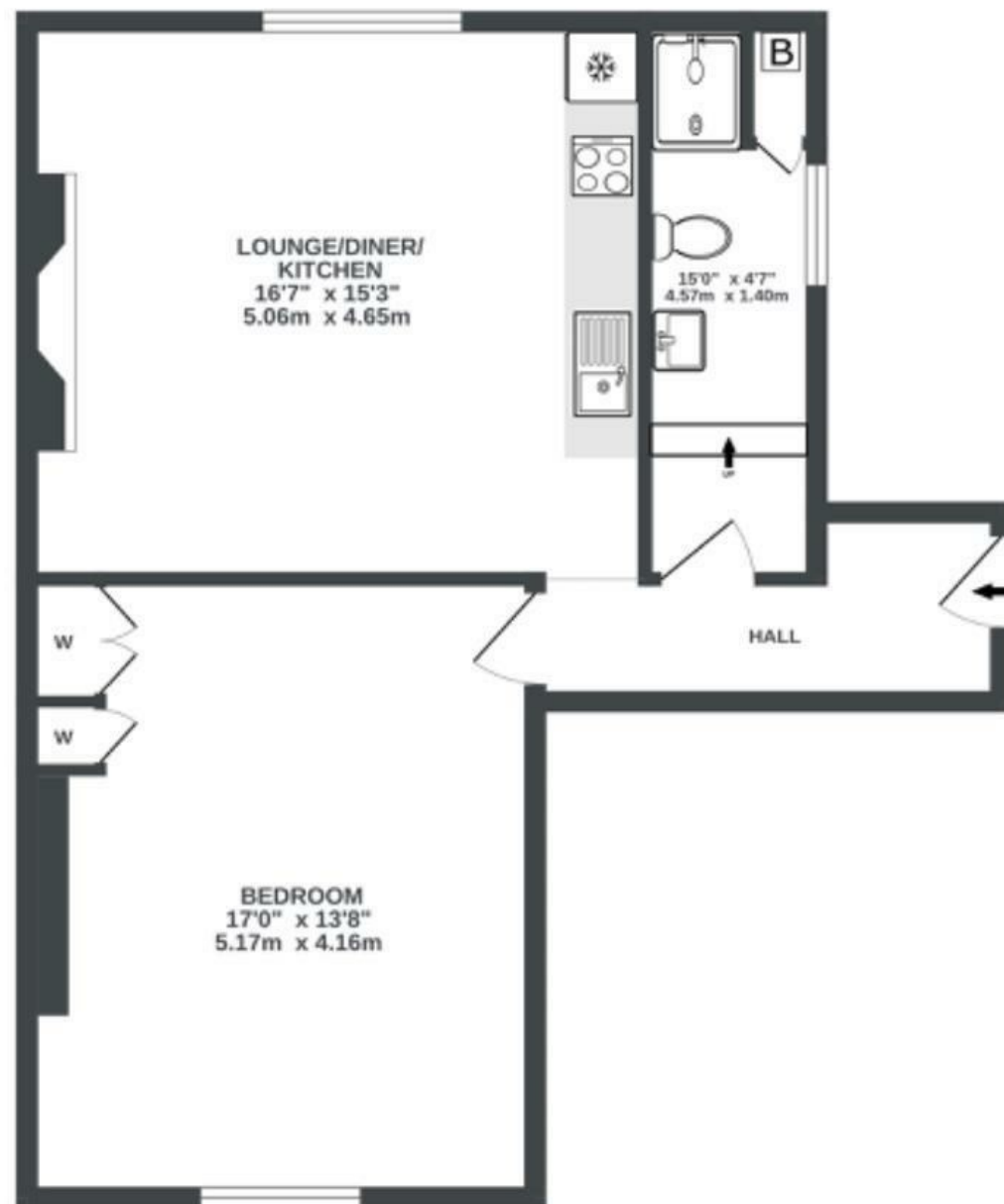
Coronation Road

SOUTHVILLE

APPROXIMATE FLOOR AREA
55 SQM / 592 SQFT



SECOND FLOOR
592 sq.ft. (55.0 sq.m.) approx.



Illustrations are for reference purposes only, measurements are approximate, not to scale.

Boardwalk

Coronation Road

SOUTHVILLE, BRISTOL

£

£280,000



BS3 1AZ

zzz

1 Bedrooms



1 Bathrooms

"Living here has been such a joy. The high ceilings and spacious rooms create a bright and airy feel and the views from both sides are phenomenal—you can see across the whole of Bristol. I'll miss sipping my morning coffee and looking out across the city! The location is hard to beat. Just a short walk from North Street and Wapping Wharf, with their independent restaurants, bars, and shops while Ashton Court and Leigh Woods are also close by, perfect for weekend walks in nature."

