

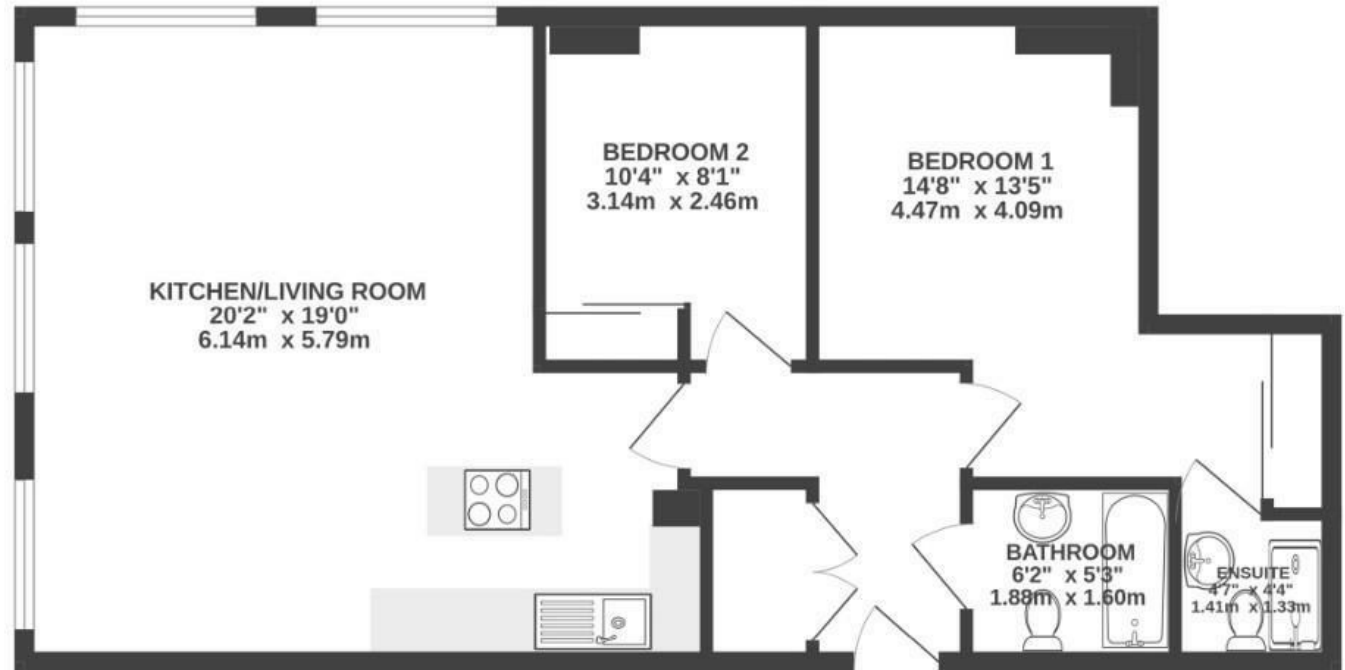
# Portland Square

ST PAULS

APPROXIMATE FLOOR AREA  
71.0 SQM / 764 SQFT



GROUND FLOOR



Illustrations are for reference purposes only, measurements are approximate, not to scale.

**Boardwalk**

# Portland Square

ST PAULS, BRISTOL

£

£325,000

zzz

2 Bedrooms



BS2 8ST



2 Bathrooms

*"The open plan living area is full of light and a beautiful well designed space. The whole flat feels light and airy. Super convenient location close to the town. Everything easy to walk to and cool bar café cosies on your doorstep."*

