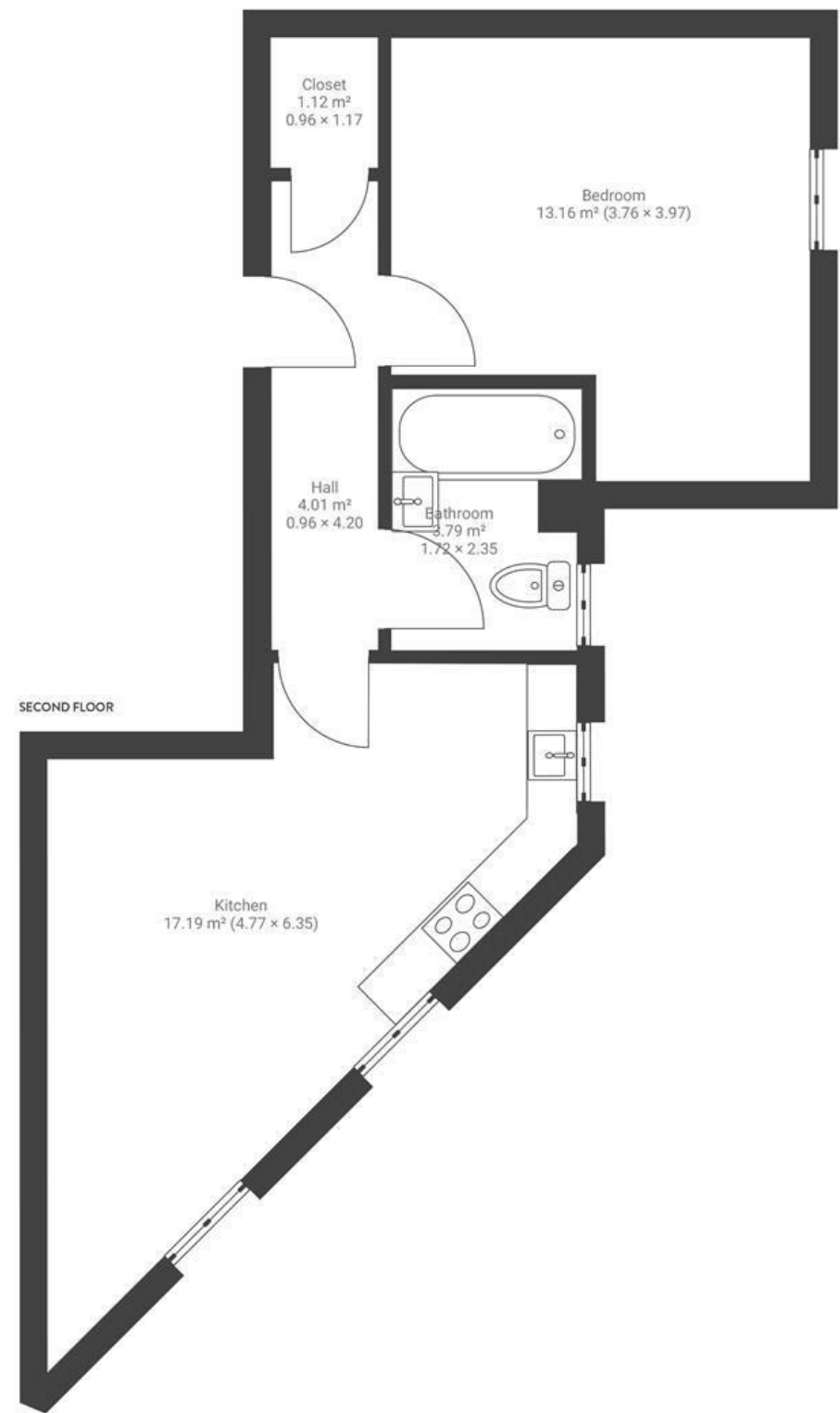


Gillham House

BISHOPSTON

APPROXIMATE FLOOR AREA
42 SQM / 452 SQFT



Boardwalk

Claremont Road

BISHOPSTON, BRISTOL



£230,000



BS7 8DX



1 Bedrooms



1 Bathrooms

"We have loved living in this flat and making it our own. We've spent a lot of our time here renovating to make the space feel homely and like a cosy retreat from buzzy Gloucester Road below. It's the best people-watching spot, and being able to nip out and have such a choice of restaurants, bars & shops just downstairs has been such a benefit to our first home. The light that floods into the flat is amazing, it's always bright, airy and warm. We love heading to The Grace for a few drinks and having dinner at one of the many great restaurants between the flat and there on the way back. Sunday mornings mean a walk up to Wilson Bakery for a bacon sandwich. We also love going to Kiln over the road to do pottery painting and having a mooch in all of the charity shops nearby. Over the summer St Andrews Park becomes our garden, a 5-minute walk from the flat."

