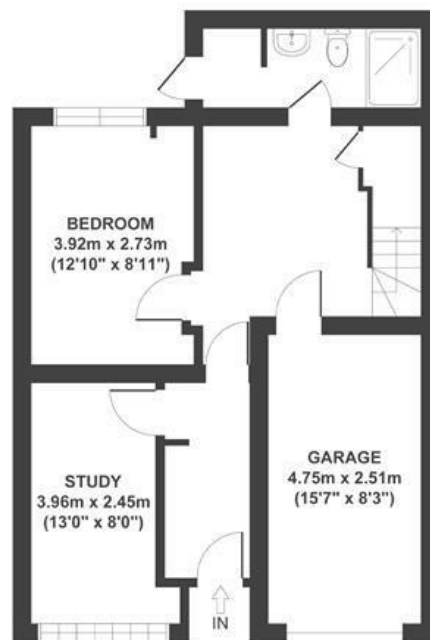
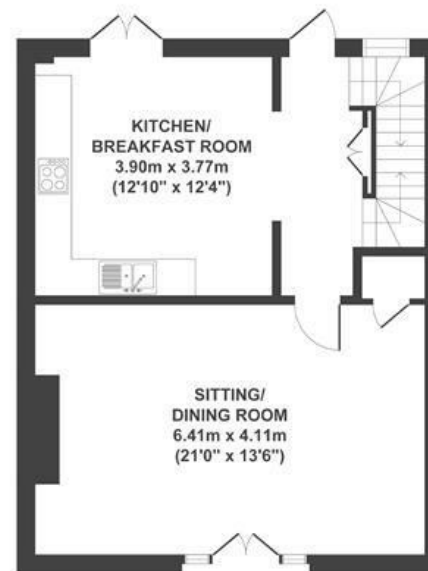


Princess Victoria Street CLIFTON

APPROXIMATE FLOOR AREA
162 SQM / 1744 SQFT



GROUND FLOOR



FIRST FLOOR



SECOND FLOOR



Boardwalk

Princess Victoria , BRISTOL

£

£925,000



BS8 4DB

zzz

4 Bedrooms



2 Bathrooms

“Living in Clifton Village is fantastic; there are so many cafe's, shops, and restaurants right on your doorstep”

