

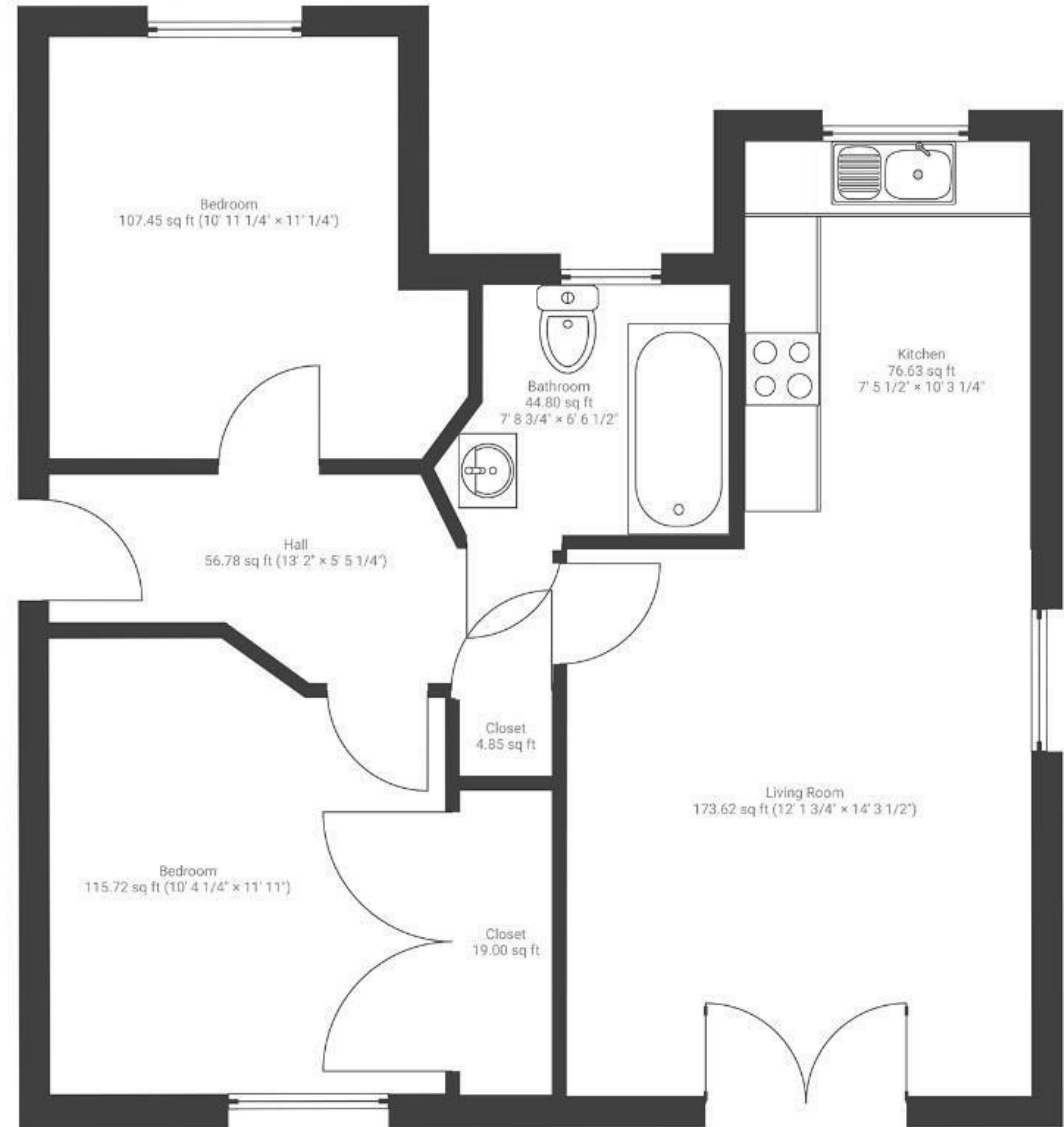
# Bull Lane

## CREWS HOLE

APPROXIMATE FLOOR AREA  
55.5 SQM / 598 SQFT



GROUND FLOOR



Boardwalk

# Bull Lane, St , BRISTOL

£

£225,000



BS5 8AB

zzz

2 Bedrooms



null

Bathrooms

*"I love the feeling of being immersed in nature but also so close to the city and all Bristol has to offer. Sandwiched between two nature reserves and walking distance to the river. The views from the front French doors are amazing and the sunsets are divine."*

