

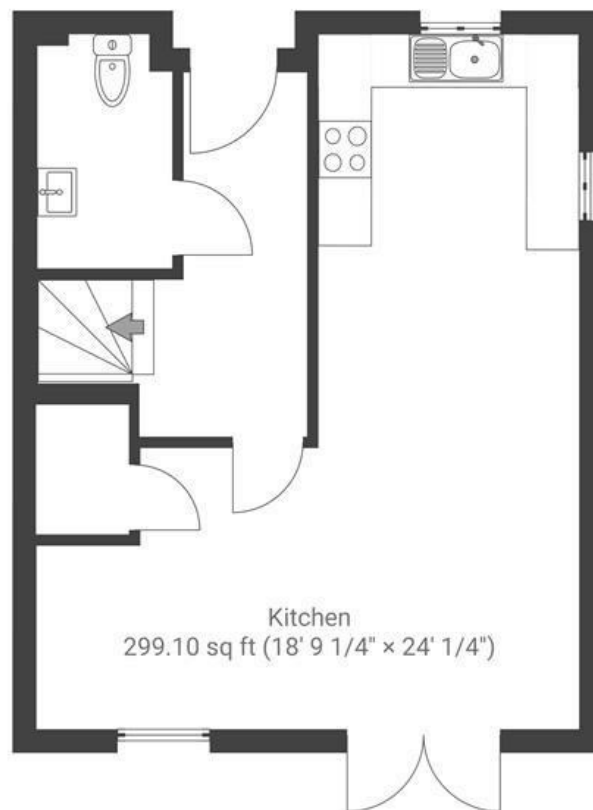
The Chocolate Factory

GREENBANK

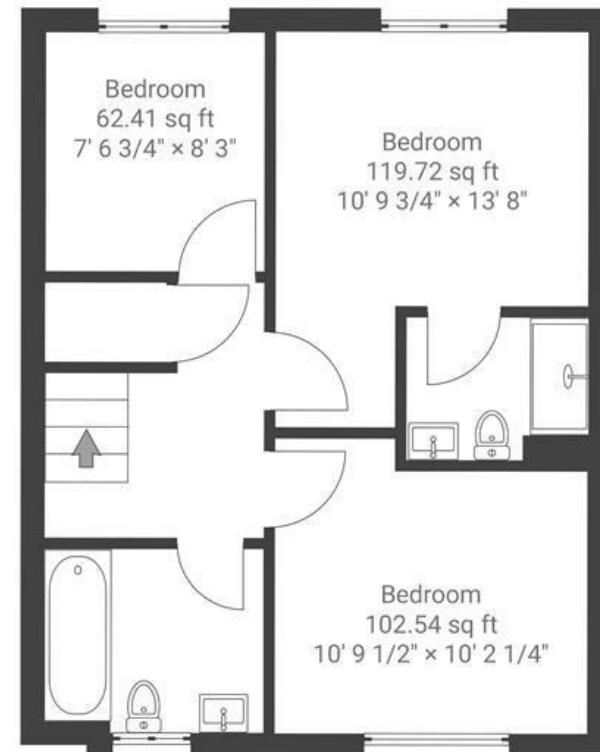
APPROXIMATE FLOOR AREA
83 SQM / 893 SQFT



GROUND FLOOR



FIRST FLOOR



Boardwalk

Shaw Road, GREENBANK, BRISTOL



£490,000



3 Bedrooms



BS5 6HP



3 Bathrooms

'Every aspect of the regeneration project of the former Elizabeth Shaw Chocolate Factory has been thoughtfully designed to compliment the surrounding homes and maintain the history of the site. Old, industrial buildings blend with new modern structures to create a development that benefits the whole neighbourhood. The site spans nearly 4.5 acres and will have links onto the Bristol and Bath Railway Path.'

