

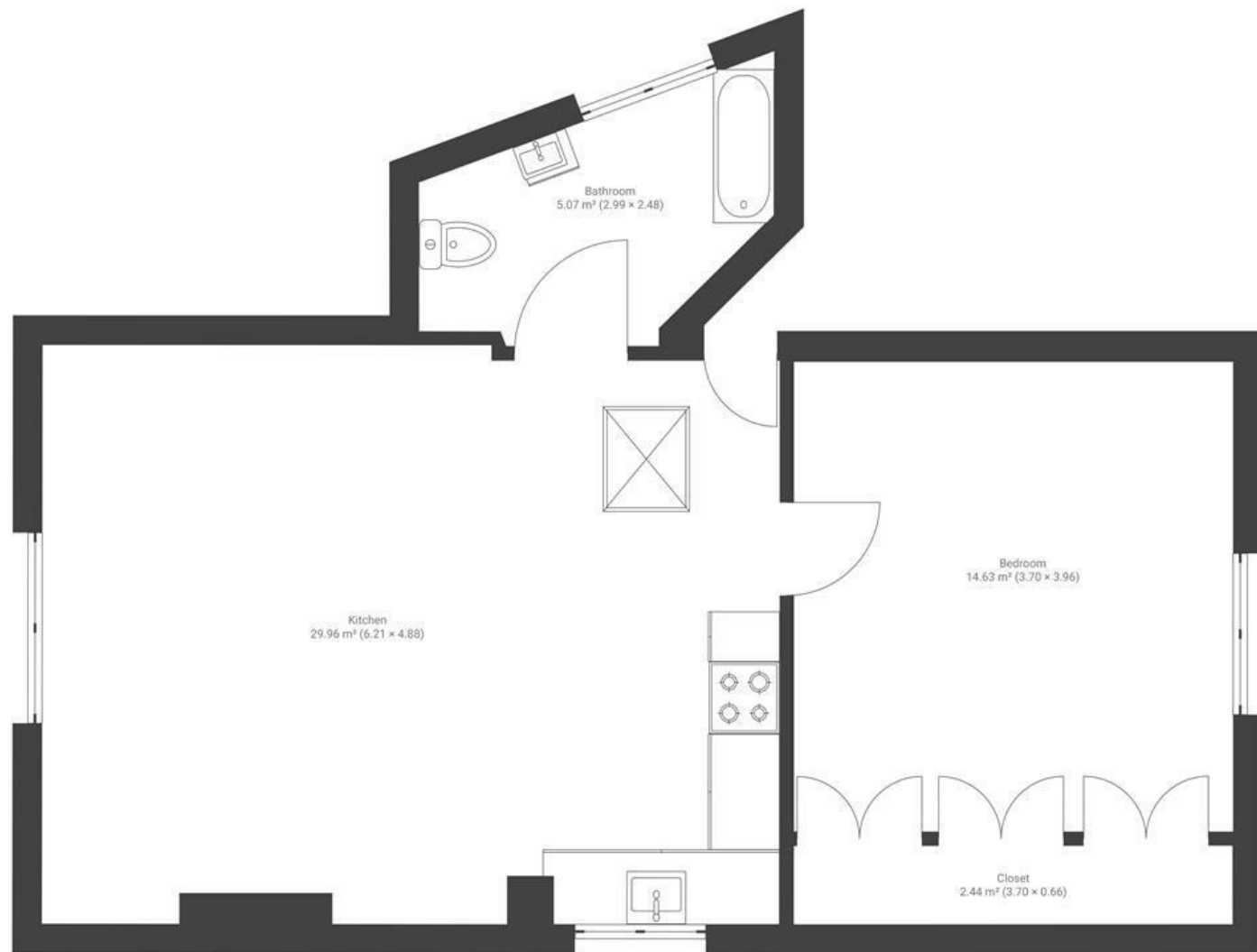
Goldney Road

CLIFTON

APPROXIMATE FLOOR AREA
53 SQM / 573 SQFT



TOP FLOOR



Boardwalk

Goldney Road

CLIFTON, BRISTOL



£290,000



1 Bedrooms



BS8 4RB



1 Bathrooms

"I've really enjoyed living here and will miss the flat a lot, it's really got a great feel to it. It's in a fantastic location with great views of Ashton Court and Dundry. It's been perfect for me whilst I've lived here as it's a short walk into the centre but also a couple of minutes walk into Clifton village with all of the great pubs and cafes there."

