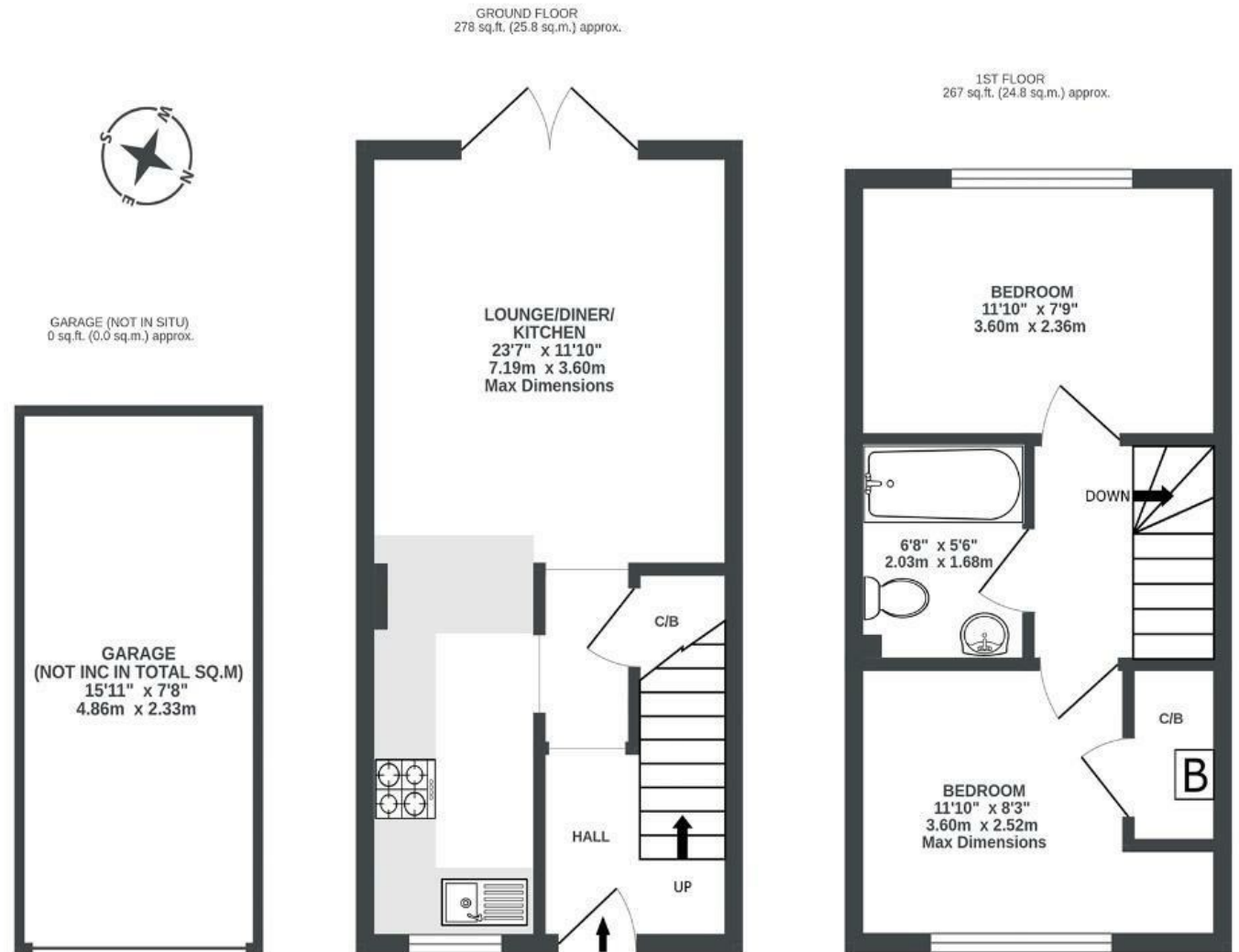


Bay Tree Close

PATCHWAY

APPROXIMATE FLOOR AREA
51.5 SQM / 554 SQFT



Illustrations are for reference purposes only, measurements are approximate, not to scale.

Boardwalk

Bay Tree Close

PATCHWAY, BRISTOL

£

£270,000



BS34 5EU

zzz

2 Bedrooms



1 Bathrooms

"We have loved calling Bay Tree Close our home, spending evenings in our cosy living room or dinners on the patio in the summer. The garden gets sun the whole day and we have done lots of work to make it a beautiful place to relax & a lot of love into making this house more modern & homely. Along this quiet little corner, you will find the kindest neighbours - we will miss them when we move!"

