

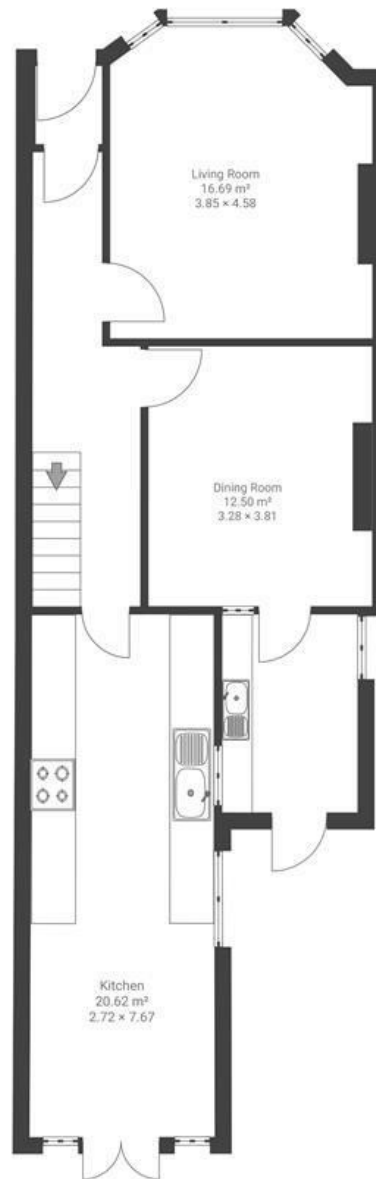
# Newbridge Road

## BRISLINGTON

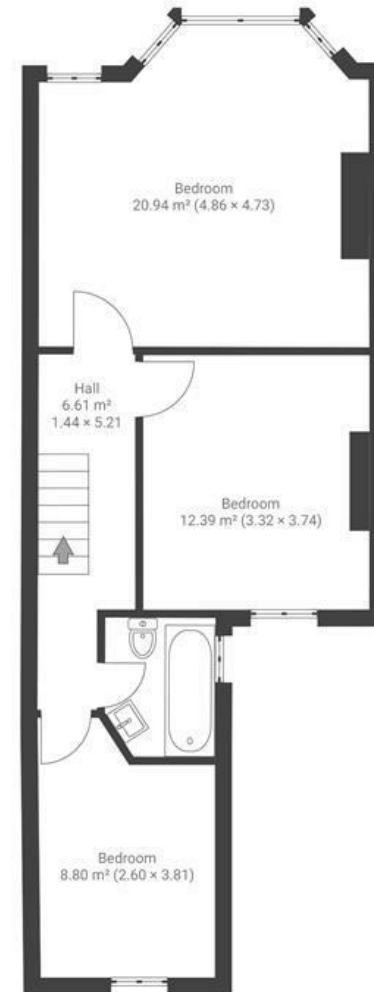
APPROXIMATE FLOOR AREA  
121 SQM / 1302 SQFT



GROUND FLOOR



FIRST FLOOR



~~Boardwalk~~

# Newbridge Road

BRISLINGTON, BRISTOL



£450,000



BS4 4DR



3 Bedrooms



2 Bathrooms

*"Simply put, we love it here and have thoroughly enjoyed turning it into our home. The community which surrounds the house is wonderful and we have felt very welcomed, both in the local pub and outside of it. The garden is a lovely suntrap and we have spent many hours both with friends enjoying a BBQ and soaking in its peaceful wildlife-friendly surroundings. It's been an excellent base for everything Bristol has to offer, quiet when you want quiet and well connected when the city comes calling."*

