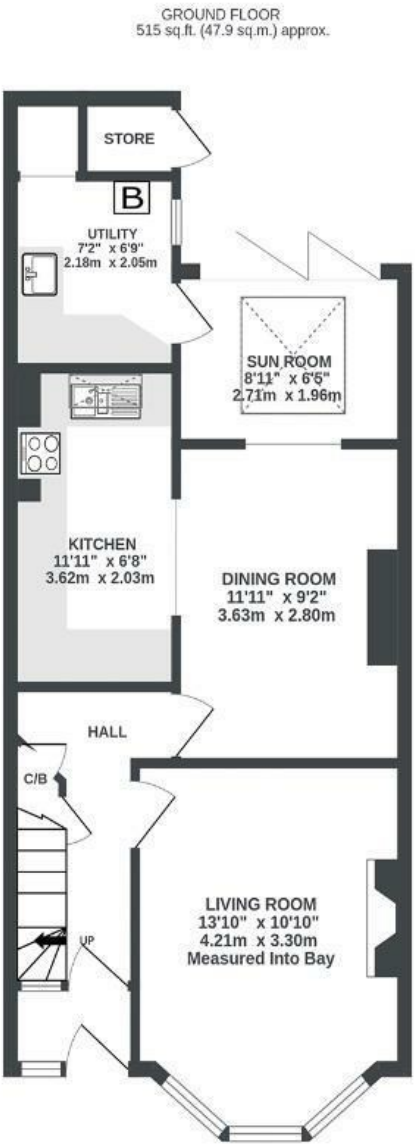


# Woodcroft Avenue

## WHITEHALL

APPROXIMATE FLOOR AREA  
111.4 SQM / 1200 SQFT



Illustrations are for reference purposes only, measurements are approximate, not to scale.

Boardwalk

# Woodcroft

WHITEHALL, BRISTOL

£

£475,000

zzz

3 Bedrooms



BS5 9AS



2 Bathrooms

*"Our neighbours have been so friendly - there's a real community vibe. We've also loved improving the house and making the most of its Victorian features, while modernising the decor and enjoying the sunlight in the loft."*

