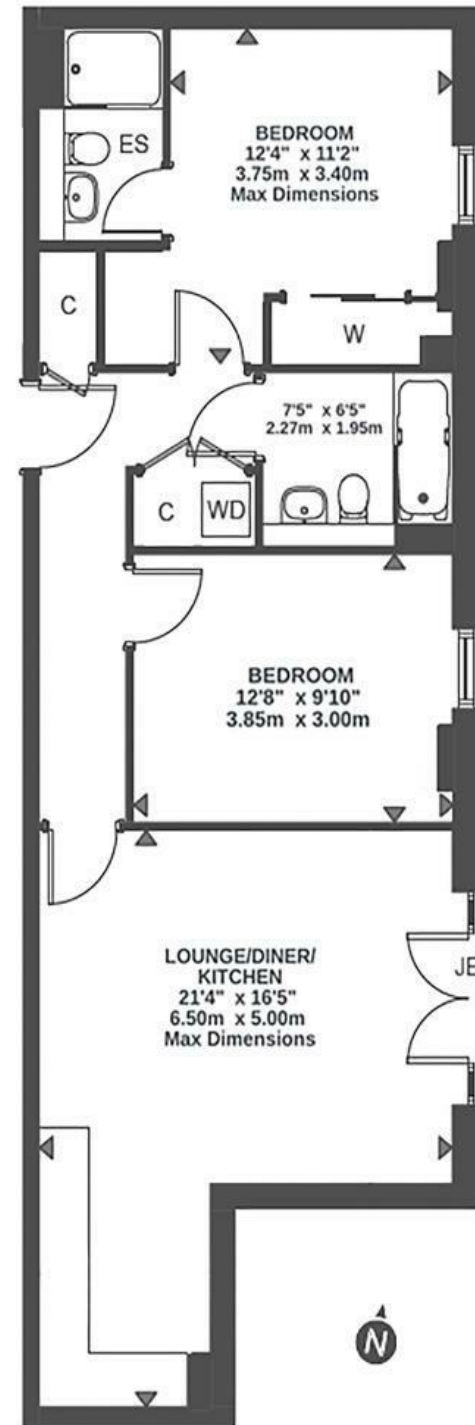


# Abel Yard

## REDCLIFFE

APPROXIMATE FLOOR AREA  
70.6 SQM / 760 SQFT



Illustrations are for reference purposes only, measurements are approximate, not to scale.

**Boardwalk**

# The Gateway

REDCLIFFE, BRISTOL

£

£410,000



BS1 6ZP

zzz

2 Bedrooms



2 Bathrooms

*"The flat is situated in Wapping Wharf which is an exciting vibrant place to live, in the heart of Bristol. The property forms part of a new development and its light spacious layout suits the modern way of life."*

