

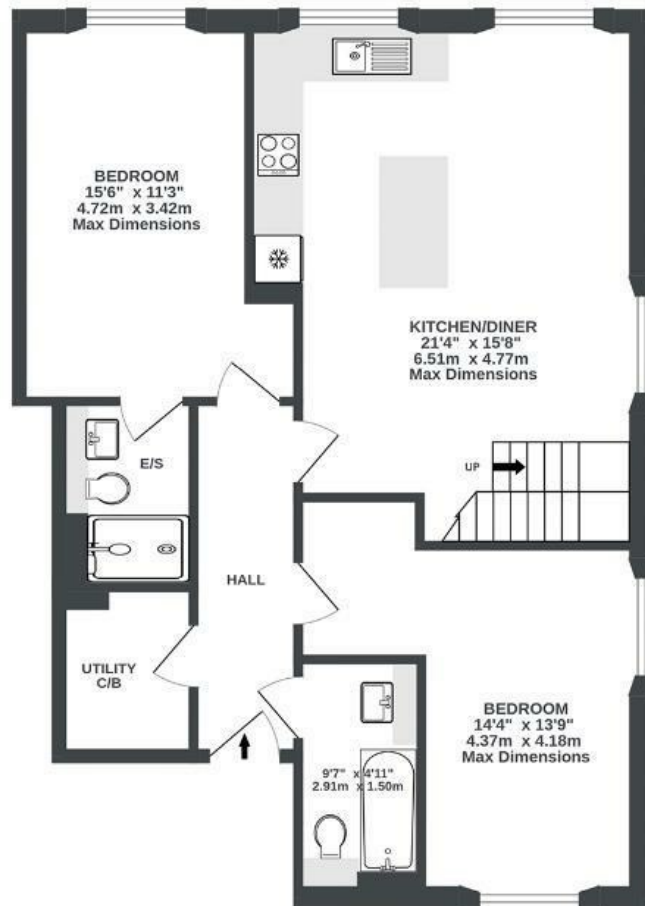
Loft House

ASHLEY DOWN

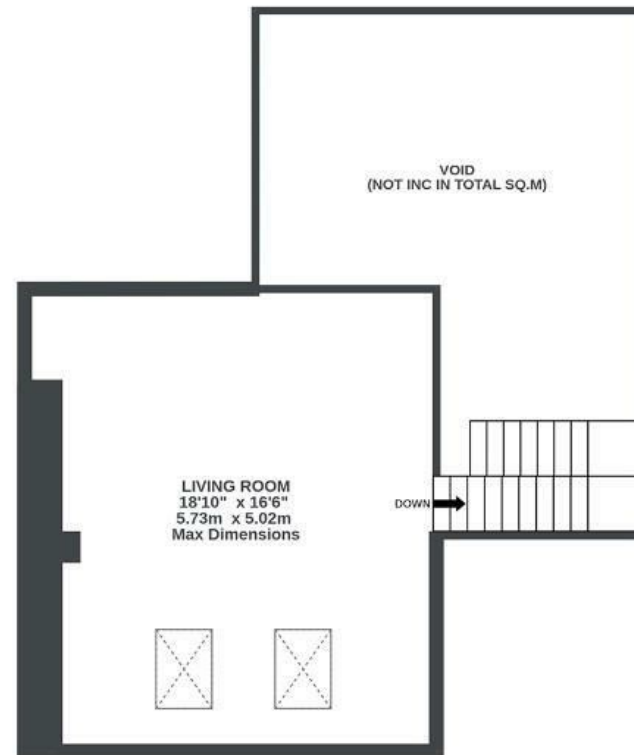
APPROXIMATE FLOOR AREA
100.7 SQM / 1084 SQFT



FIRST FLOOR
793 sq.ft. (73.7 sq.m.) approx.



MEZZANINE LEVEL
290 sq.ft. (27.0 sq.m.) approx.



Illustrations are for reference purposes only, measurements are approximate, not to scale.

Boardwalk

College Road

ASHLEY DOWN, BRISTOL

£

£400,000



BS7 9FG

zzz

2 Bedrooms



2 Bathrooms

"We immediately fell in love with the design and layout of the flat. The high ceilings and big windows make the place feel airy and full of light, while the mezzanine provides a cosy lounge space to relax that feels separated from the rest of the flat. We've both lived in lots of places in Bristol but Bishopston (particularly this close to Gloucester Road) is where we've felt most at home. Being able to easily walk to Gloucester Road and Stoke Park Estate has given us the best of both worlds."

