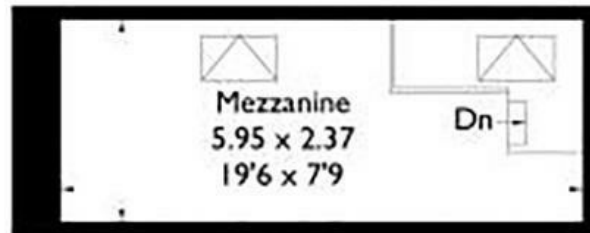


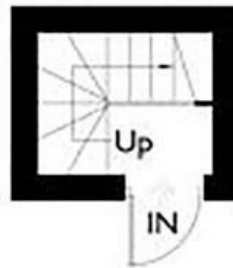
# Albemarle Row

HOTWELLS

APPROXIMATE FLOOR AREA  
104.5 SQM / 1125 SQFT



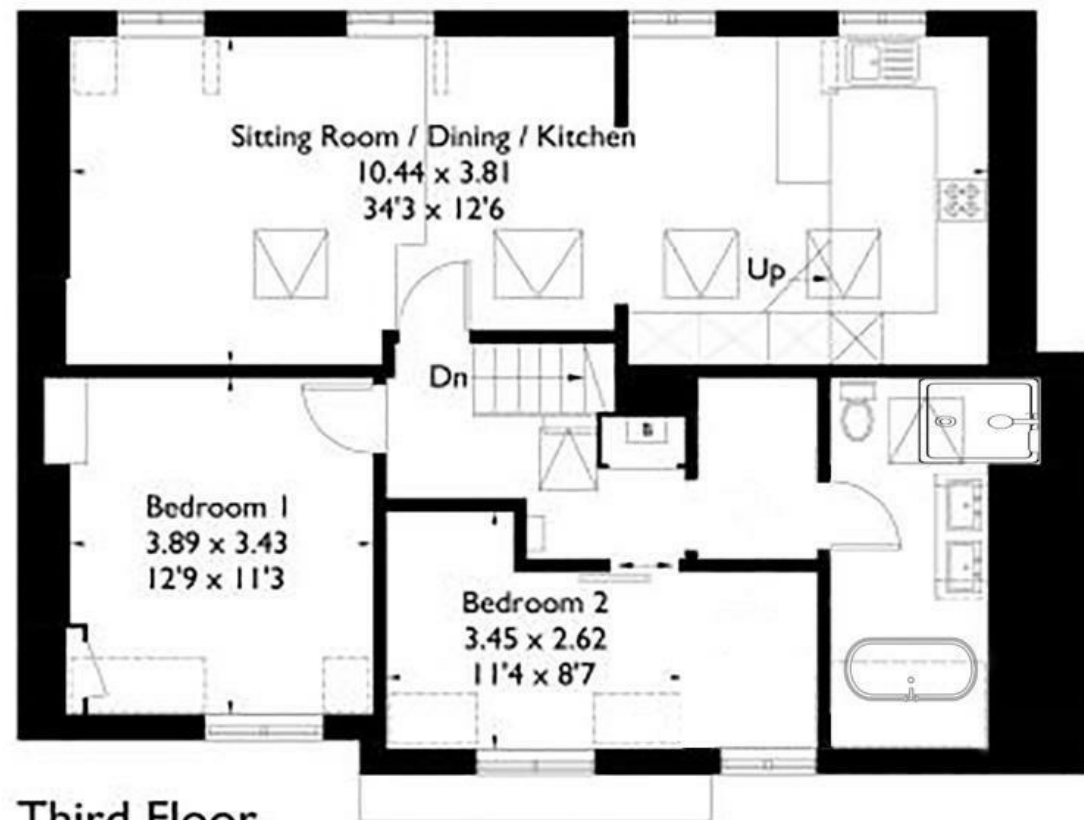
Mezzanine Level



Second Floor



Reduced headroom below 1.5m / 5'0



Third Floor

Illustrations are for reference purposes only, measurements are approximate, not to scale.

**Boardwalk**

# Albermarle Row , BRISTOL

£

£425,000



BS8 4LY

zzz

2 Bedrooms



1 Bathrooms

*"We have loved living in our home over the past four years. It's been great being able to walk up to Clifton Village for a coffee or down to the Harbourside when the sun is out. Being on the top floor means you get to see some amazing sunrises across Bristol; such a great way to start your day"*

