

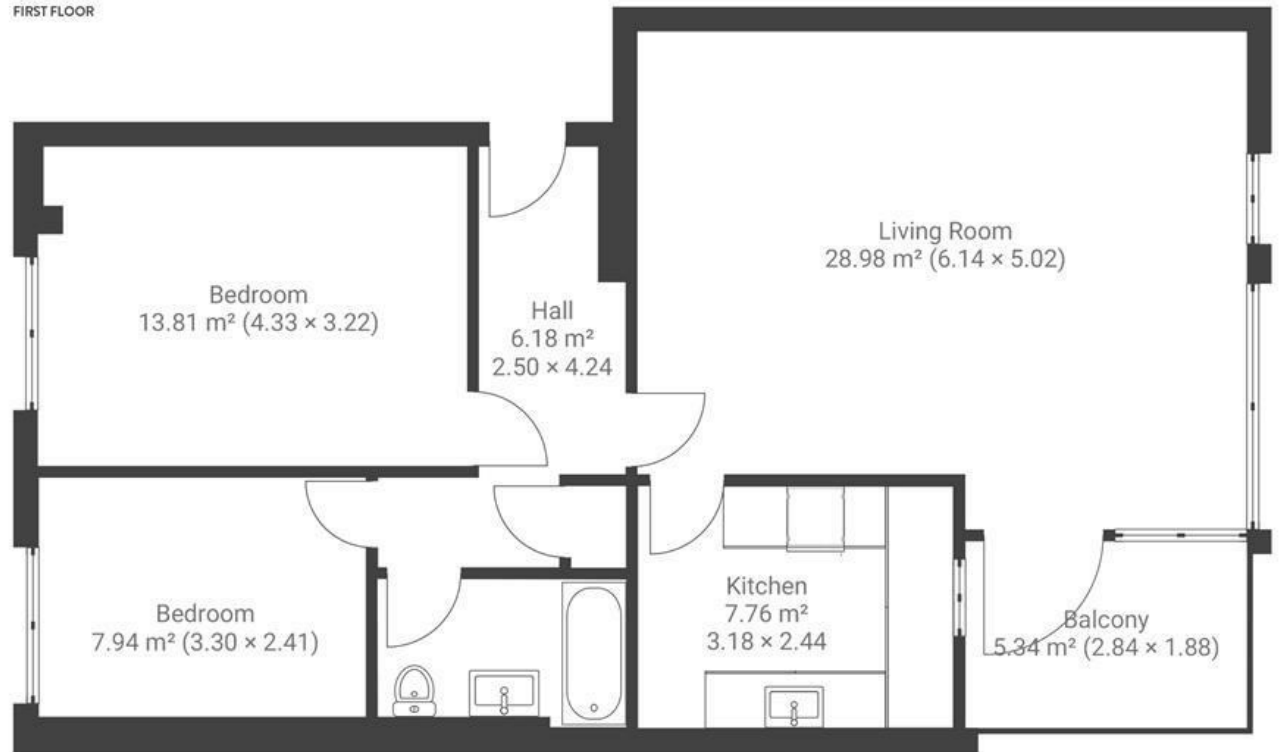
Clifton Wood Court

CLIFTON

APPROXIMATE FLOOR AREA
69 SQM / 742 SQFT



FIRST FLOOR



Boardwalk

Clifton Wood

CLIFTONWOOD, BRISTOL



£385,000



2 Bedrooms



BS8 4UL



1 Bathrooms

"We have loved living at Clifton Wood Court with such easy access to Clifton Village and the Harbourside. We have spent many weekends brunching in Clifton cafes and enjoying the beer gardens at the Clifton pubs like White Lion and Channings. The flat has been perfect for us as we both work centrally and walk to work in twenty minutes or less. The covered balcony is the perfect afternoon sun trap and the open-plan living space has been ideal for hosting friends and family."

