

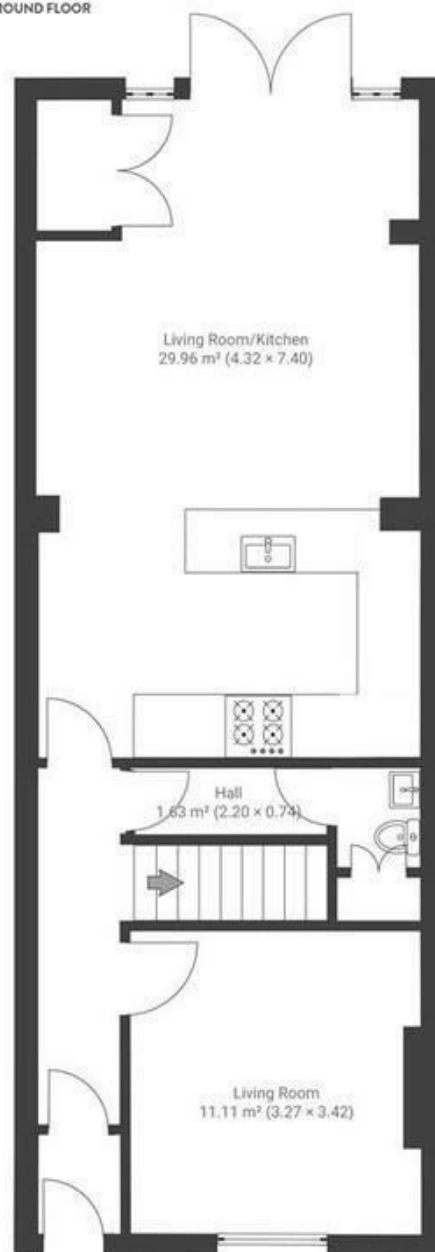
Church Lane

CLIFTONWOOD

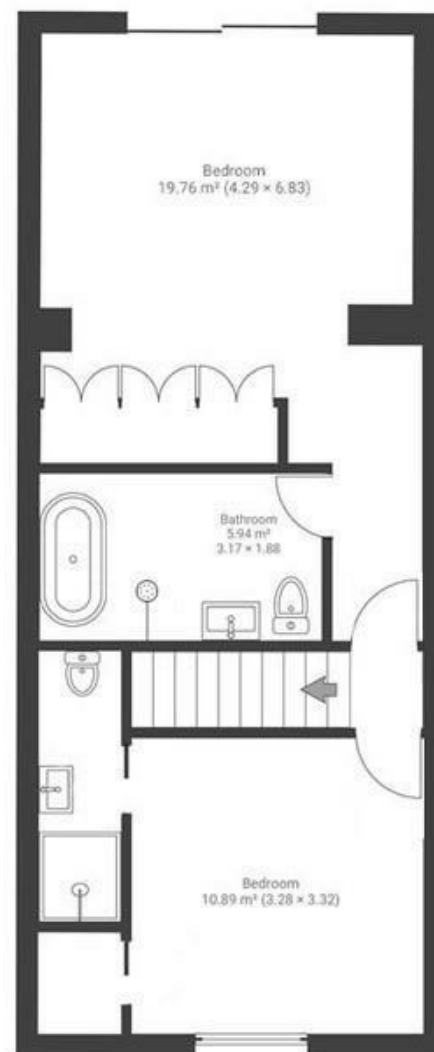
APPROXIMATE FLOOR AREA
102 SQM / 1097 SQFT



GROUND FLOOR



FIRST FLOOR



Boardwalk

Church Lane

CLIFTON, BRISTOL



£700,000



2 Bedrooms



BS8 4TX



2 Bathrooms

"It has been special living in the colourful, friendly neighbourhood of Cliftonwood. A hidden gem in Bristol, we have cherished the proximity of Clifton Village, Park Street & Bristol Harbourside and have been spoilt for choice by everything that Bristol has to offer on our doorstep. Taking in expansive city views while walking our dogs on Brandon Hill and easy access to the best eateries will be greatly missed. We hope you find your oasis here in the city as we did."

