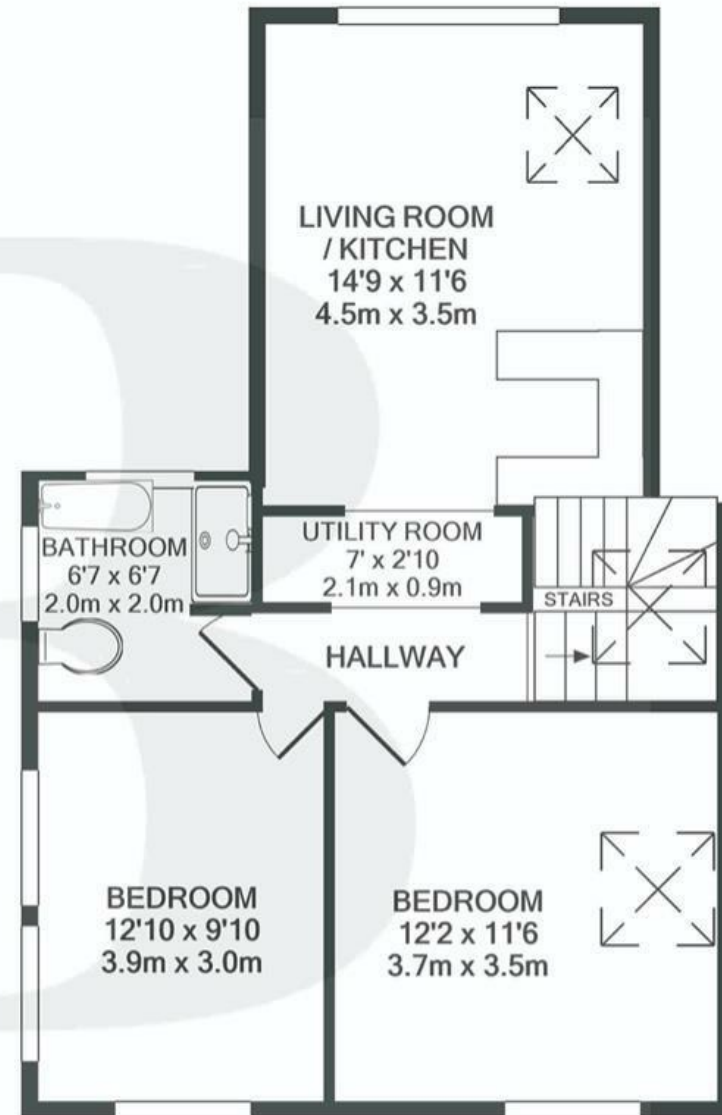


2ND FLOOR  
APPROX. FLOOR  
AREA 118 SQ.FT.  
(11.0 SQ.M.)



3RD FLOOR  
APPROX. FLOOR  
AREA 525 SQ.FT.  
(48.8 SQ.M.)

**TOTAL APPROX. FLOOR AREA 643 SQ.FT. (59.7 SQ.M.)**

Whilst every attempt has been made to ensure the accuracy of the floor plan contained here, measurements of doors, windows, rooms and any other items are approximate and no responsibility is taken for any error, omission, or mis-statement. This plan is for illustrative purposes only and should be used as such by any prospective purchaser. The services, systems and appliances shown have not been tested and no guarantee as to their operability or efficiency can be given

**Boardwalk**

# Bushy Park

, BRISTOL

£

£275,000

zzz

3 Bedrooms



BS4 2EG



1 Bathrooms

*"Newly decorated and spacious with amazing views across the city, this is the perfect flat for someone who wants a quick and convenient move as there is no chain."*

