

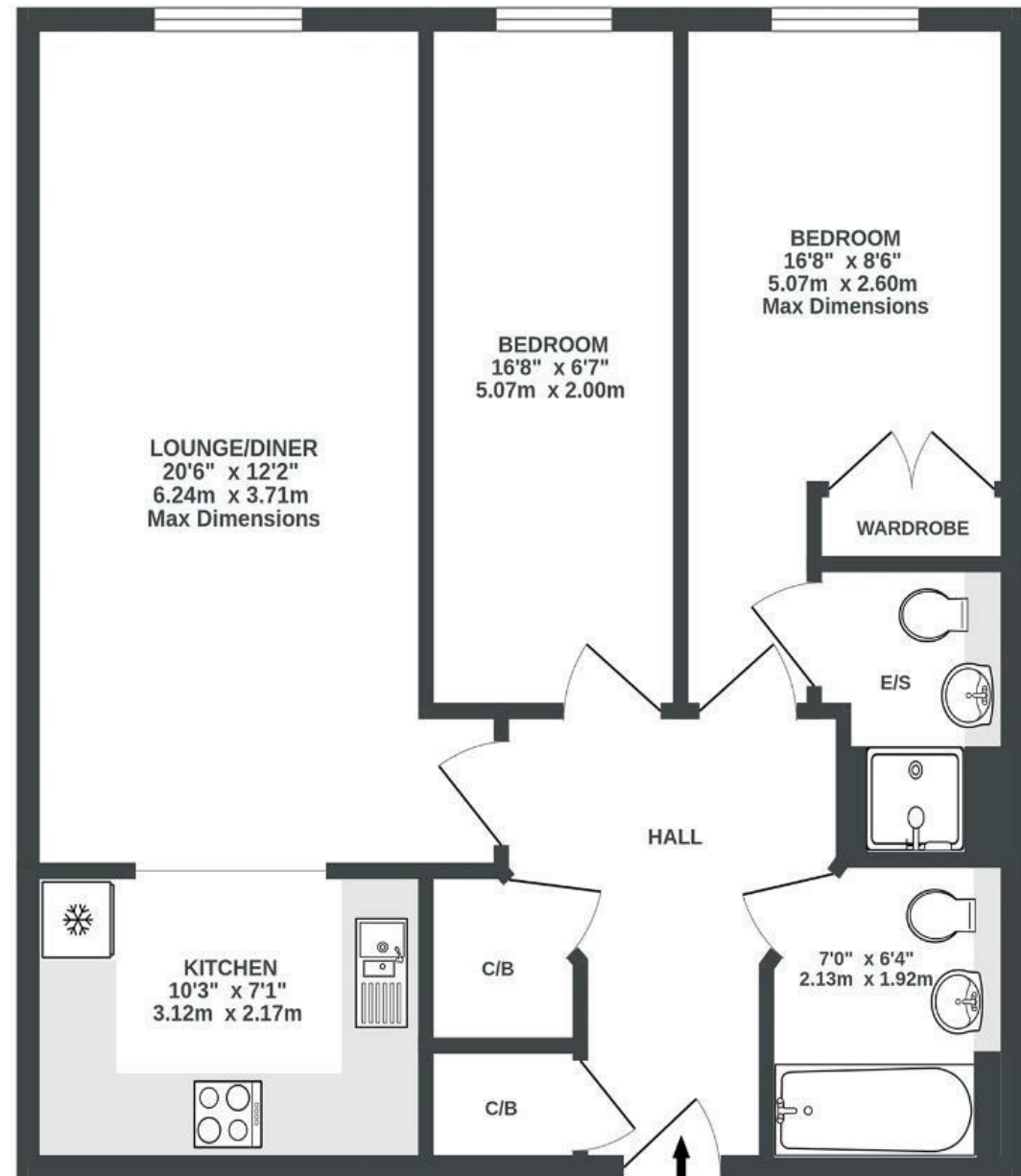
Squires Court

BEDMINSTER

APPROXIMATE FLOOR AREA
64.3 SQM / 693 SQFT



4TH FLOOR
693 sq.ft. (64.3 sq.m.) approx.



Illustrations are for reference purposes only, measurements are approximate, not to scale.

Boardwalk

Bedminster , BRISTOL

£

£285,000



BS3 4BX

zzz

2 Bedrooms



2 Bathrooms

I bought my flat a few years ago and have absolutely loved it. Its great being on the top floor, quiet and with fantastic views (Wills Memorial, Brandon Hill tower, even a glimpse of the suspension bridge). Great location, which meant I could walk everywhere, so gave up having a car and renting my parking space. Victoria Park and Windmill Hill City Farm are on the doorstep and its a short walk to Wapping Warf, Harbourside, North Street, St Nicholas, with an endless choice of good food, cafes, bars and music venues. Good community too, with an owners and a residents Facebook group, respectively. I know I will definitely miss my flat."

