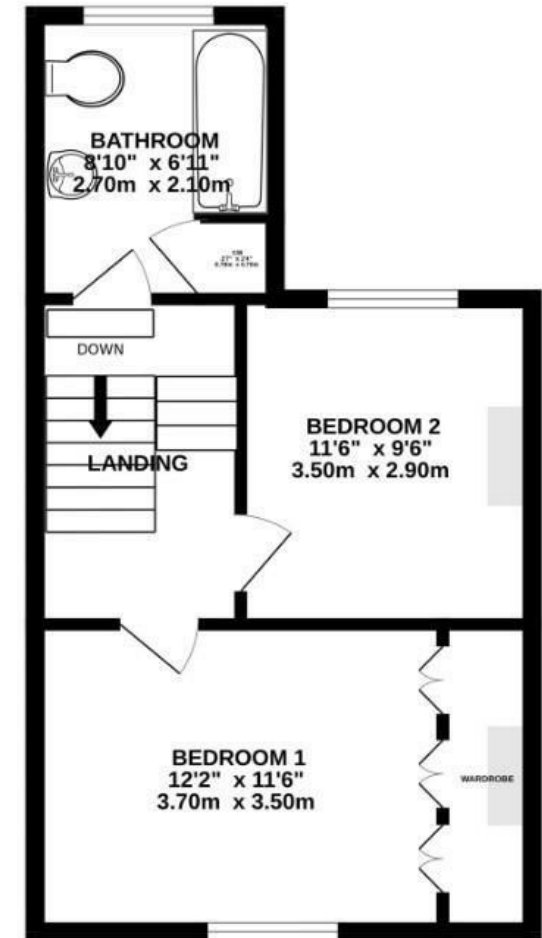
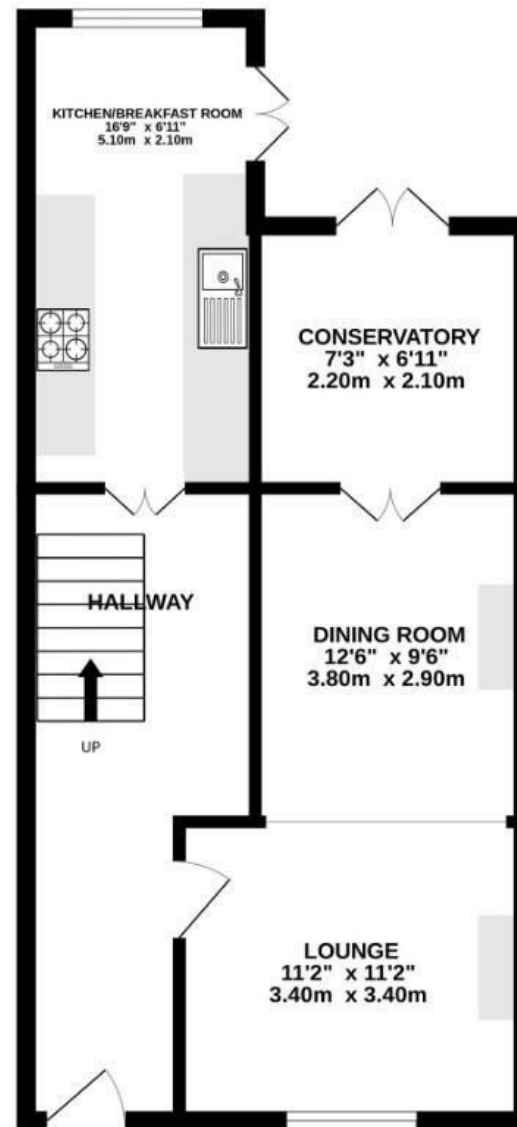


Glen Park

EASTVILLE

APPROXIMATE FLOOR AREA
77.8 SQM / 838 SQFT



Boardwalk

Glen Park

EASTVILLE, BRISTOL



£325,000



2 Bedrooms



BS5 6SJ



1 Bathrooms

"Glen Park is such a warm and inviting home to live in. With unique period features and high ceilings, this house has a really grand yet cosy feel. I've always enjoyed serving dinner to friends in the generous open-plan dining/sitting room. A real gem of a home and I feel very lucky to have lived here for the last seven years!"

