

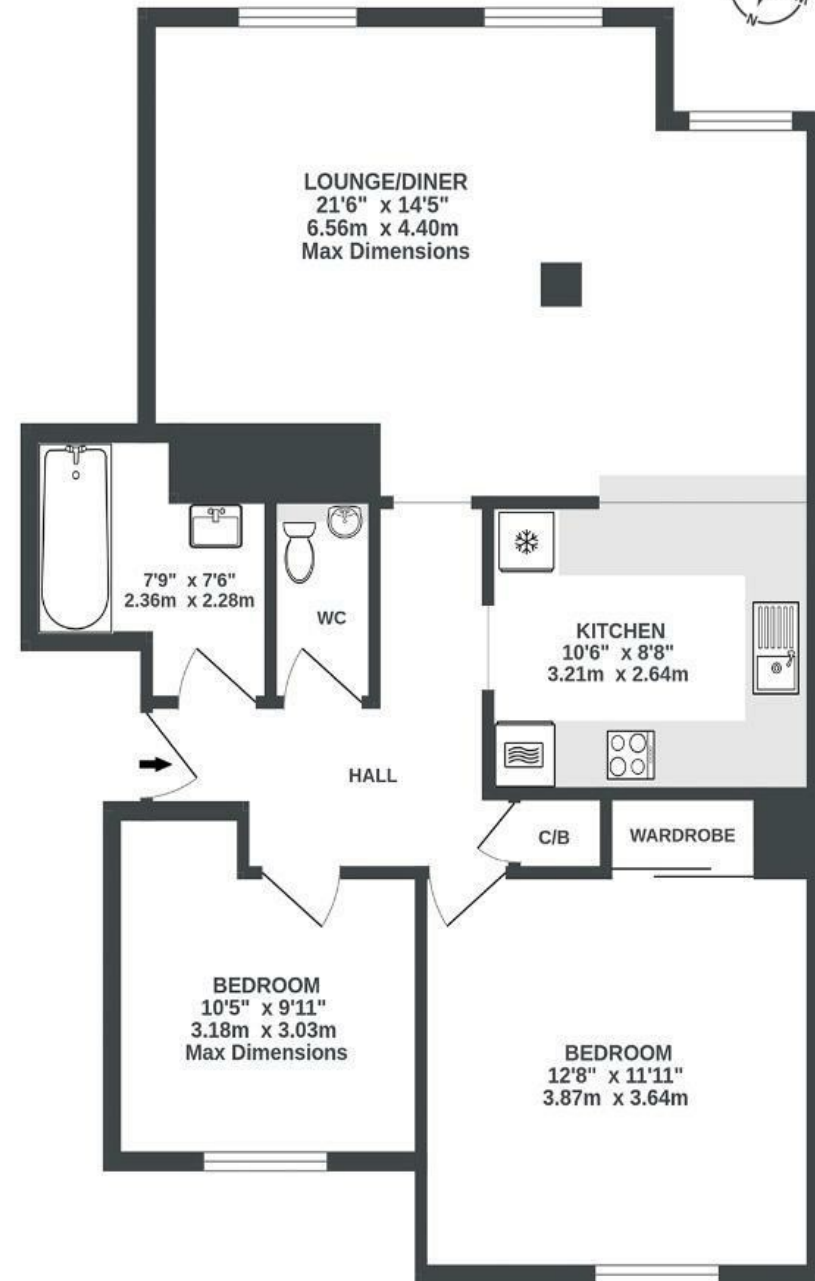
Grosvenor Court

REDLAND

APPROXIMATE FLOOR AREA
72.2 SQM / 777 SQFT



4TH FLOOR
777 sq.ft. (72.2 sq.m.) approx.



Illustrations are for reference purposes only, measurements are approximate, not to scale.

Boardwalk

Westfield Park , BRISTOL

£

£350,000



BS6 6LT

zzz

2 Bedrooms



1 Bathrooms

"This flat has been the perfect hub for us for our first home. The light-filled living room with views over Bristol really makes the flat stand out. The kitchen breakfast bar opens up the space, making it great for entertaining and clearing up after easier! It will be bittersweet to leave our home; we hope whoever moves in after us enjoys it as much as we have."

