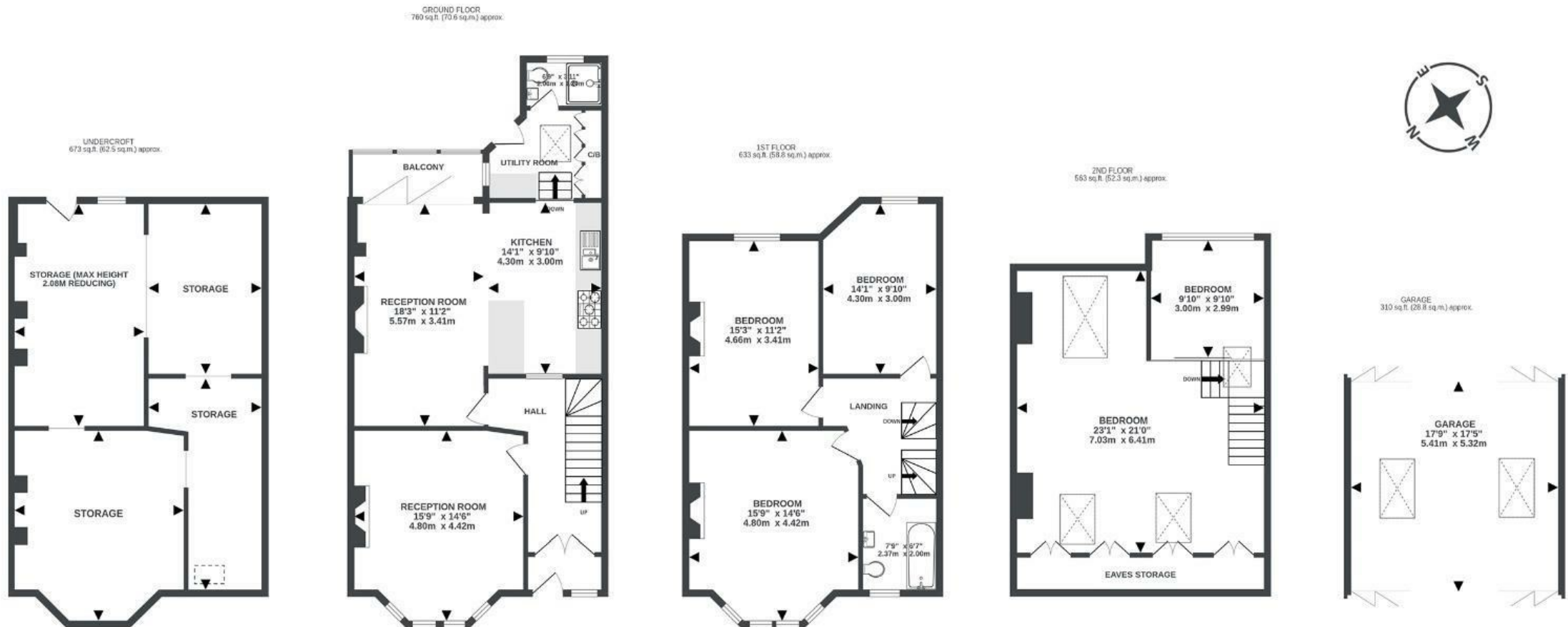


Filton Avenue

HORFIELD

APPROXIMATE FLOOR AREA
273 SQM / 2939 SQFT



Illustrations are for reference purposes only, measurements are approximate, not to scale.

Boardwalk

Filton Avenue

HORFIELD, BRISTOL

£

£665,000



BS7 0AQ

zzz

5 Bedrooms



2 Bathrooms

"So much love has gone into making this a special family home these past fifteen years. We have enjoyed the brilliant, versatile space Filton Avenue has offered us for our various creative pursuits indoors and outside. With far reaching views over Purdown, watching the sun rising over the city is a beautiful way to start the day; the house perfectly positioned, bathed in morning light throughout the open plan kitchen/dining room, and bringing the cosy living room to life in the late afternoon."

