

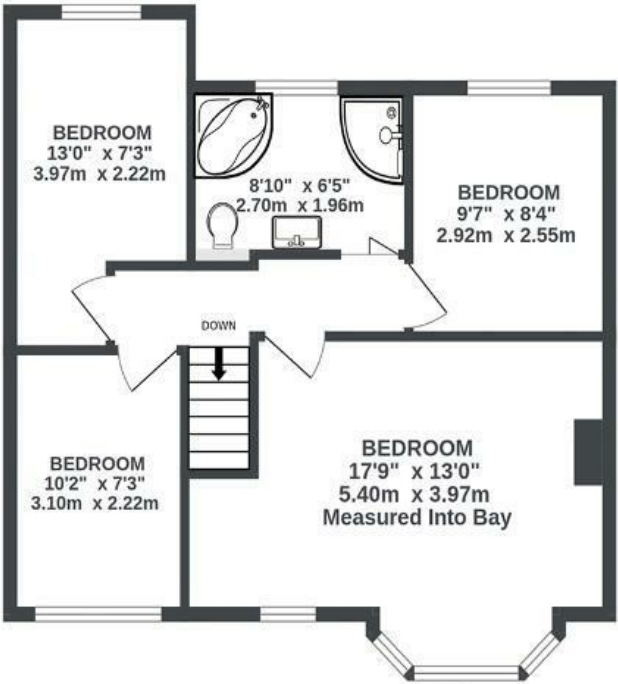
# Durleigh Close

## HEADLEY PARK

APPROXIMATE FLOOR AREA  
138.9 SQM / 1496 SQFT



1ST FLOOR  
543 sq.ft. (50.4 sq.m.) approx.



Illustrations are for reference purposes only, measurements are approximate, not to scale.

**Boardwalk**

# Durleigh Close

, BRISTOL

£

£495,000



BS13 7NQ

zzz

4 Bedrooms



2 Bathrooms

*"We have put a lot of love and care into carefully renovating the property to our style over the last 6 years to give us both a modern but cosy style of living. The large kitchen dining area has been a perfect place to entertain and with the full width bifold doors it has really allowed us to have a fully open plan style of living."*

