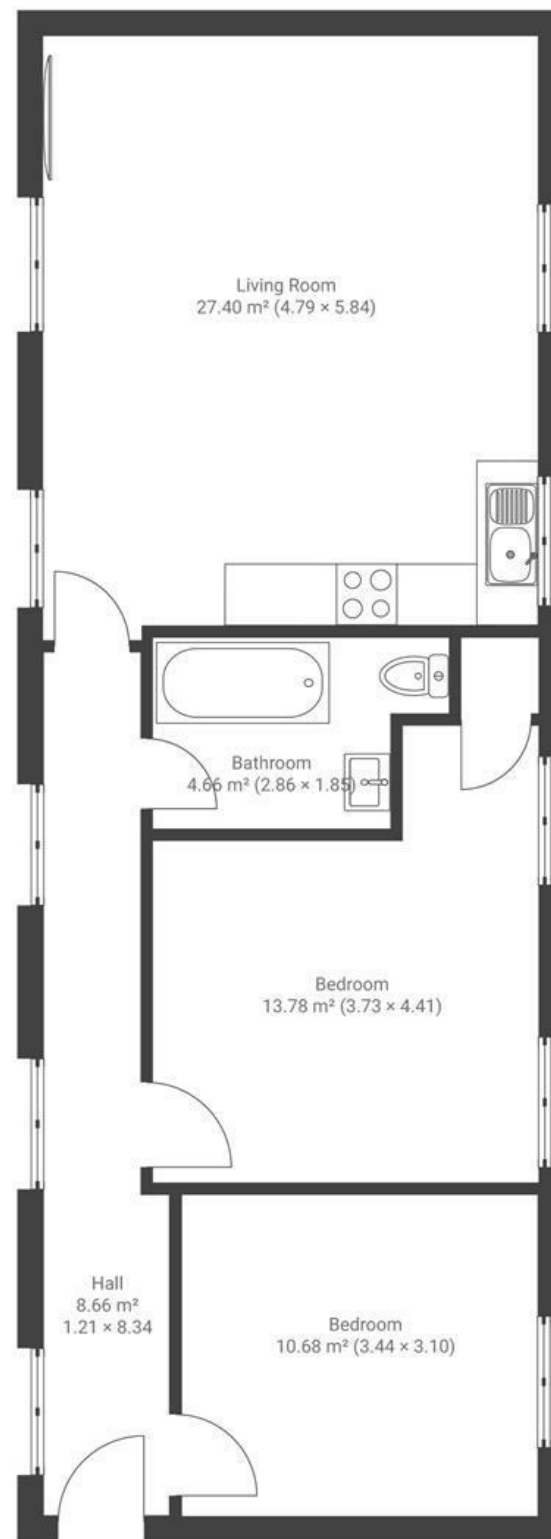


# Old Shoe Factory

ST GEORGE

APPROXIMATE FLOOR AREA

65.7 SQM / 707 SQFT



**Boardwalk**

# Old Shoe

, BRISTOL

£

£295,000



BS5 8EX

zzz

2 Bedrooms



1 Bathrooms

*"Living on the top floor with windows on both sides of the building makes it light and airy as well as offering amazing views over the city of Bristol. It's a perfect spot to watch fireworks on New Year's Eve and Bonfire night. The high ceilings and brick wall gives it a stylish loft feel. We've loved hosting parties with friends and always get a "wow" when they walk in."*

