

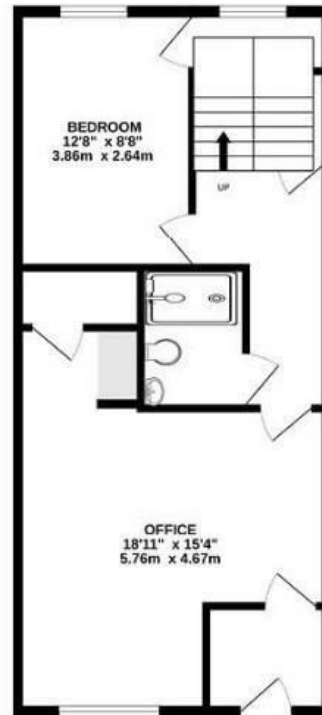
Packers Way

GREENBANK

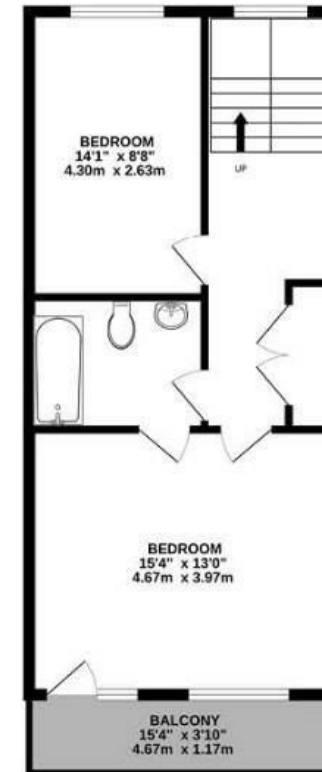
APPROXIMATE FLOOR AREA
141.8 SQM / 1,527 SQFT



GROUND FLOOR



1ST FLOOR



2ND FLOOR



Illustrations are for reference purposes only, measurements are approximate, not to scale.

Boardwalk

Packers Way

GREENBANK, BRISTOL



£635,000



3 Bedrooms



BS5 6FP



3 Bathrooms

'Every aspect of the regeneration project of the former Elizabeth Shaw Chocolate Factory has been thoughtfully designed to compliment the surrounding homes and maintain the history of the site. Old, industrial buildings blend with new modern structures to create a development that benefits the whole neighbourhood. The site spans nearly 4.5

