

Lydney Road

SOUTHMEAD

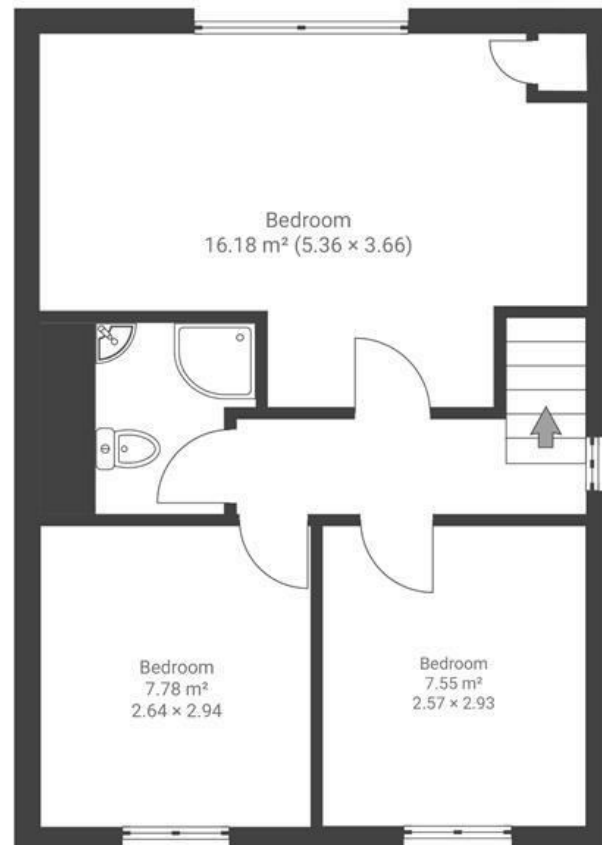
APPROXIMATE FLOOR AREA
76.2 SQM / 820 SQFT



GROUND FLOOR



FIRST FLOOR



Boardwalk

Lydney Road

SOUTHMEAD, BRISTOL



£320,000



3 Bedrooms



BS10 5JS



1 Bathrooms

"Lydney Road is a friendly road and we have enjoyed being owners of this home. The house has a lot of positives with parking at the front and the size of the garden at the back. Our tenant has looked after the home really well and we hope it will be a great home for its next owner"

