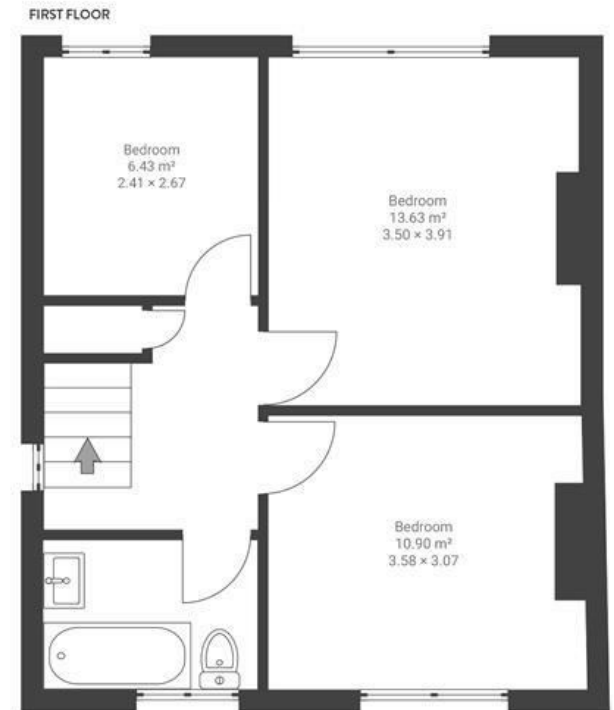


Cottrell Road

EASTVILLE

APPROXIMATE FLOOR AREA
92.1 SQM / 992 SQFT



Boardwalk

Cottrell Road

EASTVILLE, BRISTOL

£

£385,000

zzz

3 Bedrooms



Bristol, BS5

6TI



1 Bathrooms

"From fire-pit gatherings on the riverbank, to tranquil coffee mornings spotting kingfishers; our unique garden has been a sanctuary for us and wildlife alike. The open kitchen-diner has made our home a favourite for dinner-parties, and we'll miss cosy evenings by the log-burner. Living alongside the vibrant community hubs of Eastville Park and Bridge Farm, there's always something exciting nearby, as well as incredible local shops & places to eat (Bristol Sweet Mart is a family favourite!)."

