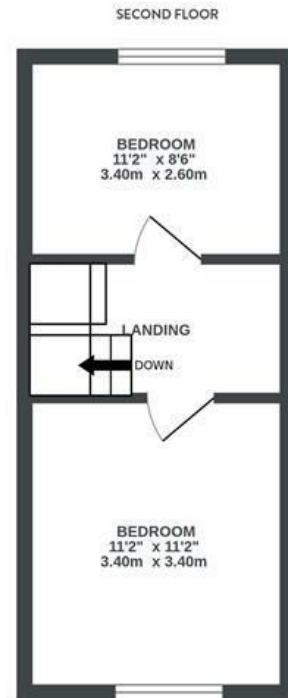
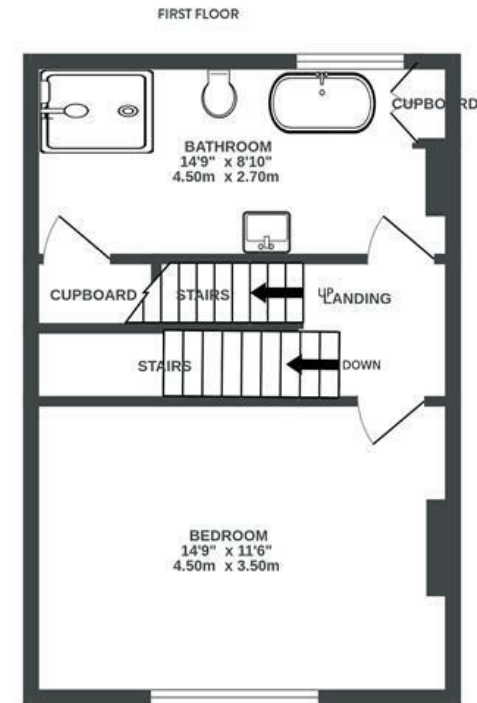
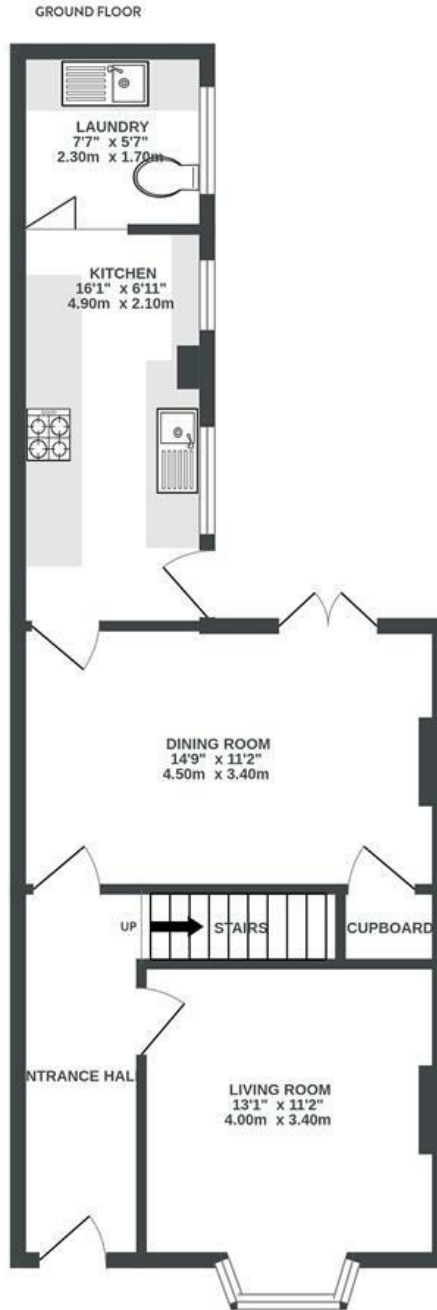


Downend Road FISHPONDS

APPROXIMATE FLOOR AREA
102.5 SQM / 1104 SQFT



Boardwalk

Downend Road

FISHPONDS, BRISTOL



£365,000



3 Bedrooms



Bristol, BS16



2 Bathrooms

5 AP

"We moved to Fishponds from Victoria Park looking for a larger house to grow our family. In that time we have seen the area evolve and there is a wonderful sense of community here. We know all our neighbours and can depend on them, including holding spare keys and looking after our house when we are away. We love being walking distance to the high street in Fishponds and also Staple Hill. Equally it is a short drive to town and we have lots of buses if we don't feel like driving."

