

# Pitt Road

## BISHOPSTON

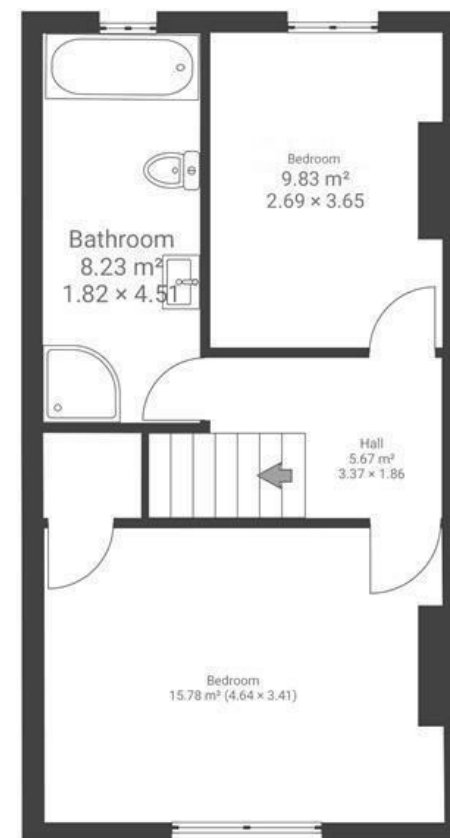
APPROXIMATE FLOOR AREA  
98.4 SQM / 1059 SQFT



GROUND FLOOR



FIRST FLOOR



**Boardwalk**

# Pitt Road

## HORFIELD, BRISTOL

£

£435,000

zzz

2 Bedrooms



BS7 8TY



2 Bathrooms

*"I loved living in Pitt Road. There is a real sense of community, the residents have a WhatsApp group and there is an annual street party. Being near to Horfield Common and it's fab café are a real bonus. The cafes and bars on the Gloucester Road are fantastic too. Despite proximity to the Gloucester Road the garden is peaceful and quiet."*

