

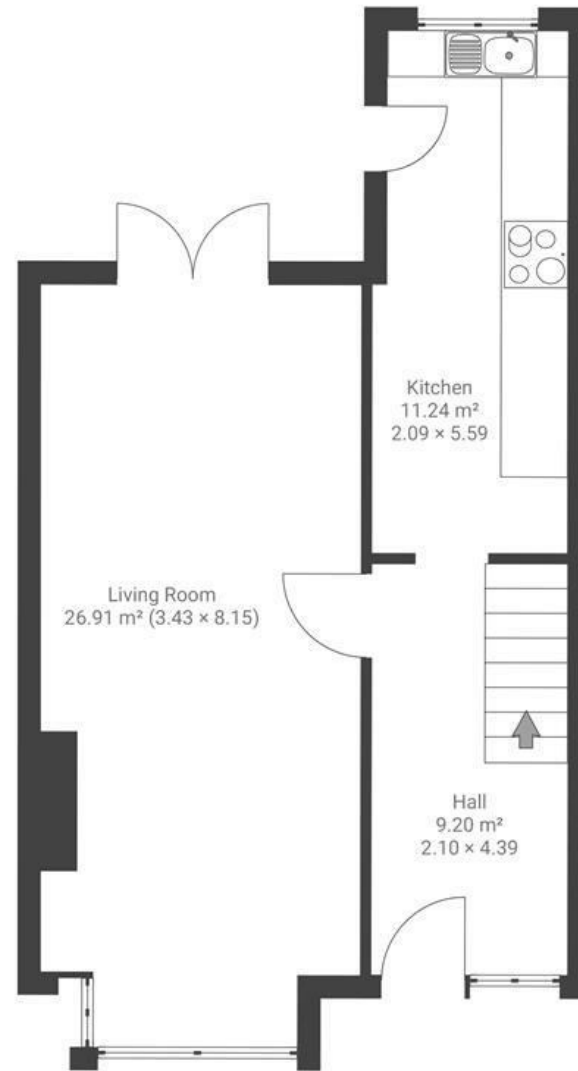
# Bloomfield Road

## BRISLINGTON

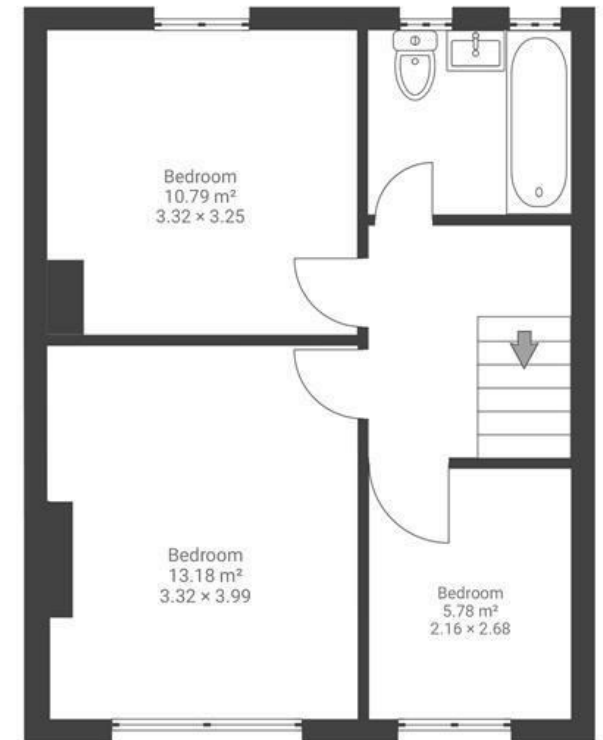
APPROXIMATE FLOOR AREA  
89.6 SQM / 964 SQFT



GROUND FLOOR



FIRST FLOOR



Boardwalk

# Bloomfield Road , BRISTOL

£

£370,000

zzz

3 Bedrooms



Bristol, BS4  
30X



1 Bathrooms

*"I have taken care and pride in updating my home. I want to leave it a better place than I found it for its next owners and I'll be sorry to leave. I love seeing the garden come to life in the spring and watching the magnolia tree bloom. My home is light and feels airy, which I love about it. The garden is a real sun trap."*

