

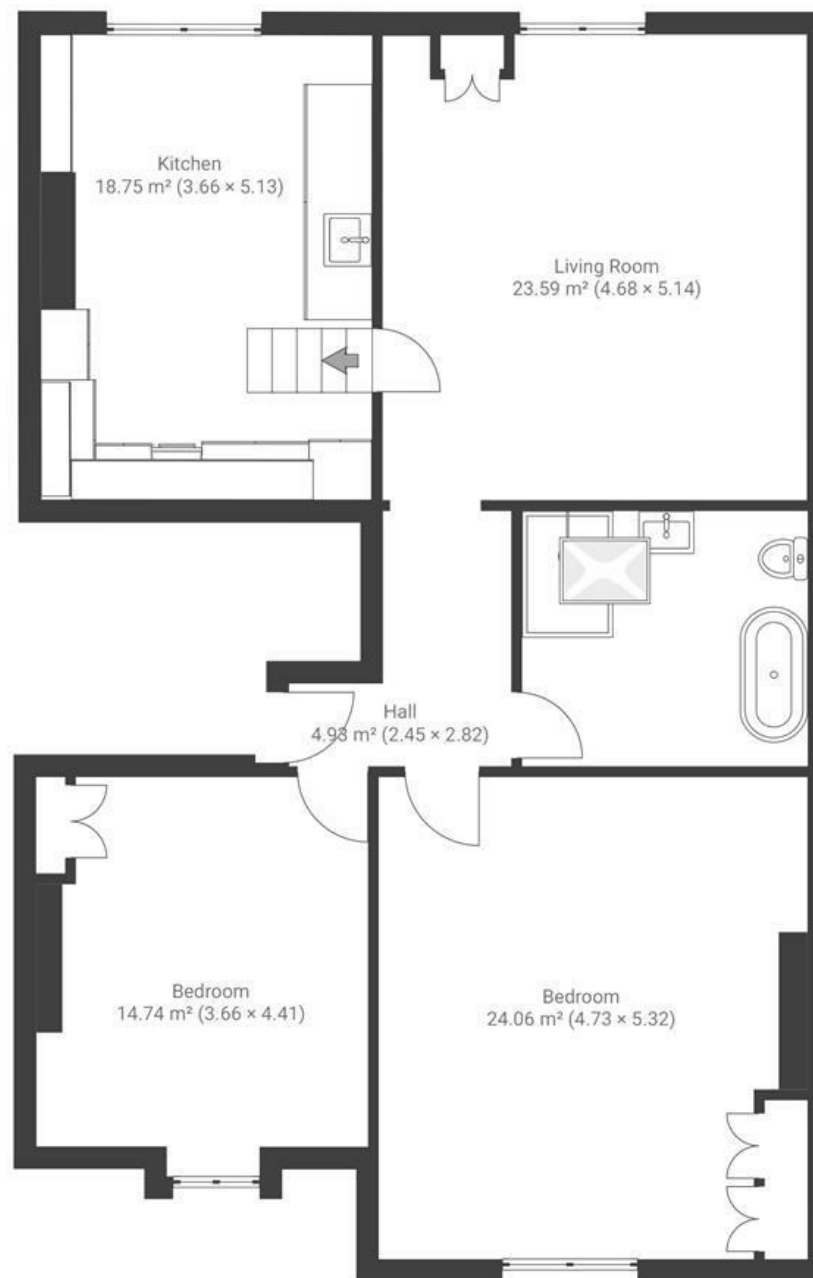
# The Glen

## WESTBURY PARK

APPROXIMATE FLOOR AREA  
105 SQM / 1130 SQFT



TOP FLOOR



Boardwalk

# The Glen

WESTBURY PARK, BRISTOL



£400,000



2 Bedrooms



Bristol, BS6



1 Bathrooms

7 IH

*"We've loved living on The Glen for the last four years. It's a quiet road tucked away, but within a ten minute walk to the bustle of Whiteladies Road and Henleaze High Street where lots of our favourite spots are. There's cafes like Burra and Little Shop and Pantry, as well as some of Bristol's best restaurants like Bravas and Little French. We are only a hundred metres away from The Downs where we run every week, and its the perfect spot for a summer picnic. The views of the city are also amazing."*

