

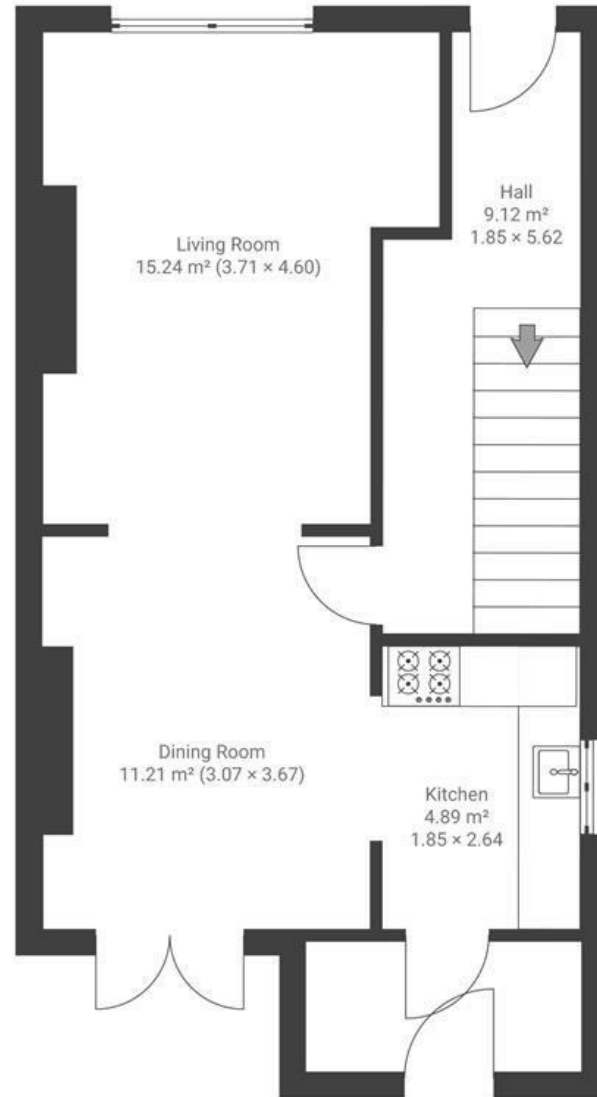
Sherwell Road

BRISLINGTON

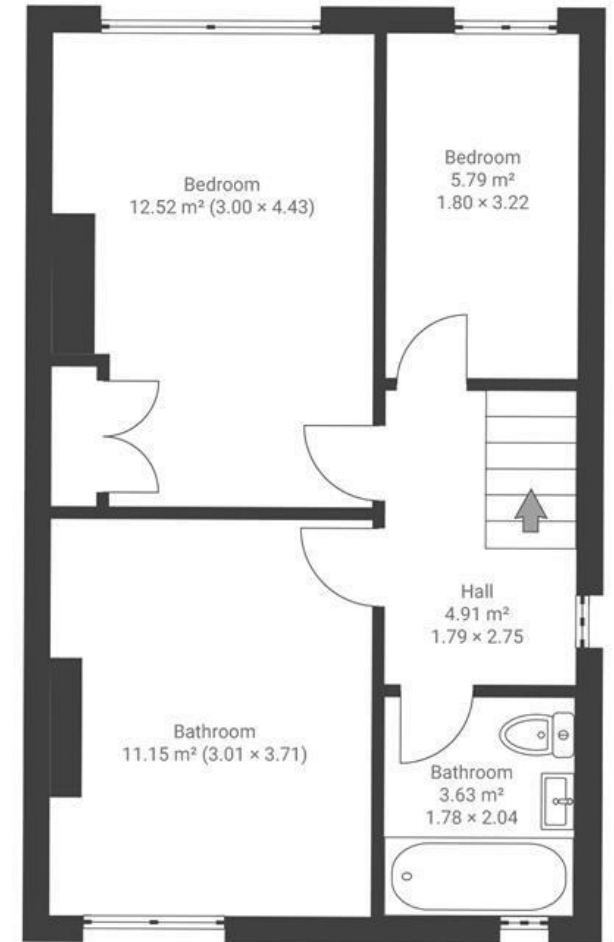
APPROXIMATE FLOOR AREA
86.8 SQM / 934 SQFT



GROUND FLOOR



FIRST FLOOR



Boardwalk

Sherwell Road

, BRISTOL



£365,000



3 Bedrooms



Bristol, BS4



1 Bathrooms

4 IX

"When we first viewed our home, we were immediately drawn to the large spacious rooms and the amount of light that the property lets in. We love the open plan of the living and dining room. In the summer it welcomes beautiful sunlight shining in and is even better having the doors open, leading to the garden. In the winter it feels cosy and homely. One of our favourite things about living in the area has been Nightingale valley. It honestly is like stepping into a magical forest, which is truly a hidden gem. It is a beautiful woodland area perfect for dog walks, picnics or a morning/afternoon stroll."

